

Asia/Pacific Airport Coordinators Association (APACA)

Agenda Item 2

WSG Modification (WSG 10th Edition)

18th APACA meeting
18 June, 2019
Cape Town, South Africa

Slot Allocation with Current WSG



Primary Criteria for Initial Slot Allocation with Current WSG

8.3.2 Historic Slots

- The first priority of slot allocation is historic slots.

8.3.3 Changes to Historic Slots

- Changes to a historic slot should have priority over new requests for the same slot within the capacity available.

8.3.4 Slot Pool

- Once historic slots and changes to historic slots have been allocated, the coordinator will establish a slot pool, including any newly created slots.
- Slots available in the pool are allocated to airlines requesting a slot, using the criteria set out in 8.3.5, 8.3.6 and 8.4 below.

8.3.5 New Entrants

- Only airlines are eligible for new entrant status.
- 50% of the slots contained in the pool at initial slot allocation must be allocated to new entrants, unless requests by new entrants are less than 50%. The coordinator will treat requests of new entrants and other airlines fairly, in accordance with the coordination parameters across the day.

8.3.6 Introduction of Year Round Operations

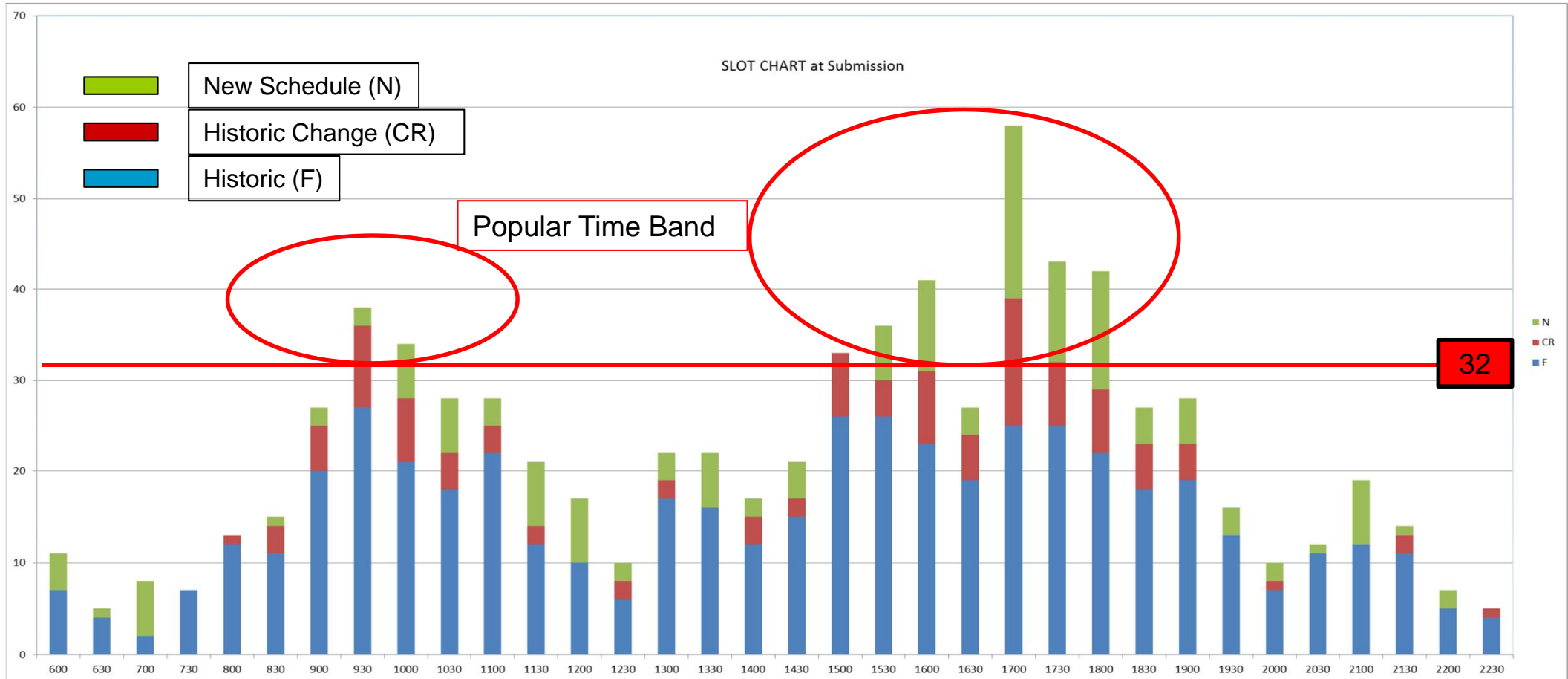
- Within each category (changes to historic slots, allocations to new entrants and other allocations from the slot pool), a request to extend an existing operation to operate on a year round basis should have priority over a new slot request.

8.4 ADDITIONAL CRITERIA FOR INITIAL SLOT ALLOCATION

- When slots cannot be allocated using the primary criteria as set out in 8.3 above, consideration should be given to the following factors:

- a) Effective Period of Operation: b) Type of Service and Market: c) Competition: d) Curfews:
e) Requirements of the Travelling Public and Other Users: f) Frequency of Operation: g) Local Guidelines:

Request Distribution at Initial Submission



The maximum movement per 30 minutes is 32.
Time band from 9:30 to 10:00 is the popular time band in the morning.
Time band from 15:00 to 18:00 is the popular time band in the afternoon.

First Step of Slot Allocation

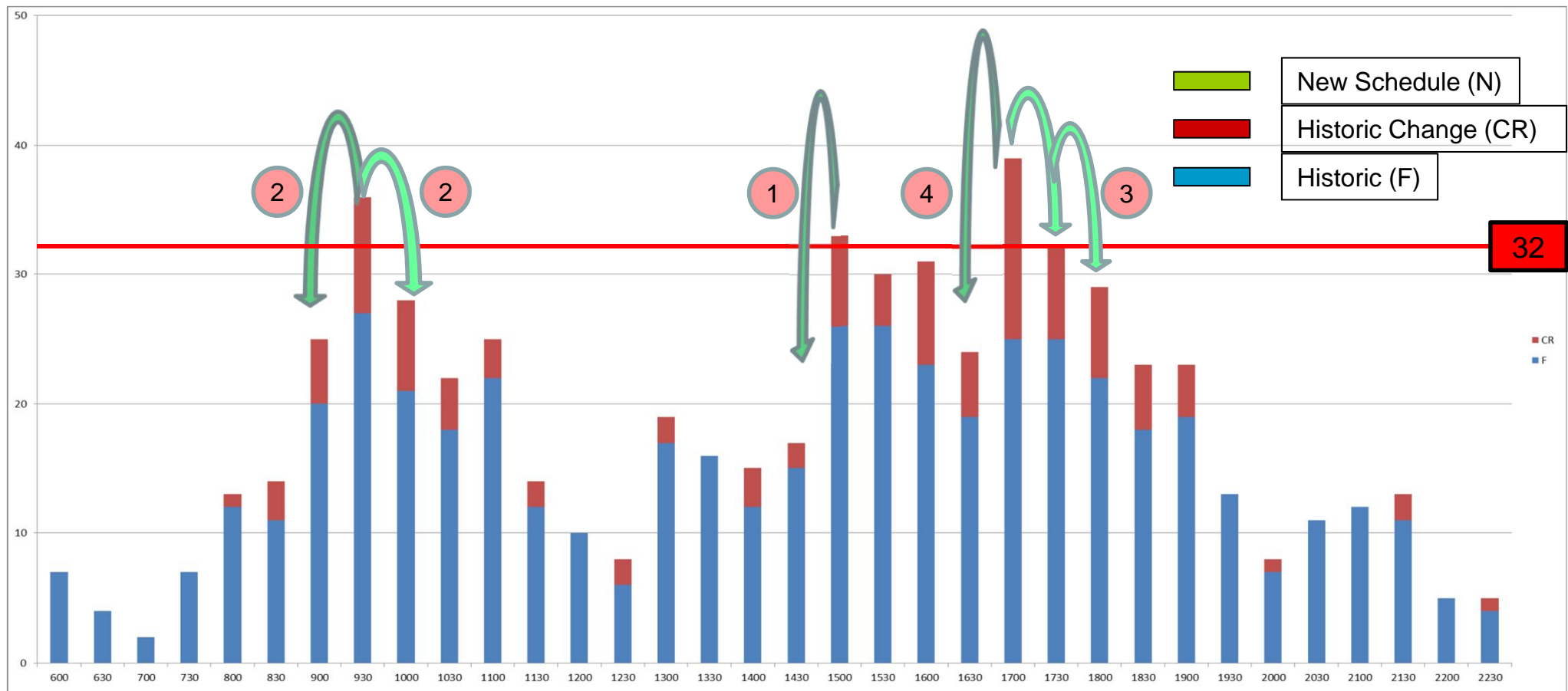
New Schedule will be taken out.

1st Priority is "Historic Slots (F)"

2nd Priority is "Changes to Historic Slots (CR)"

2

The number of slots moved



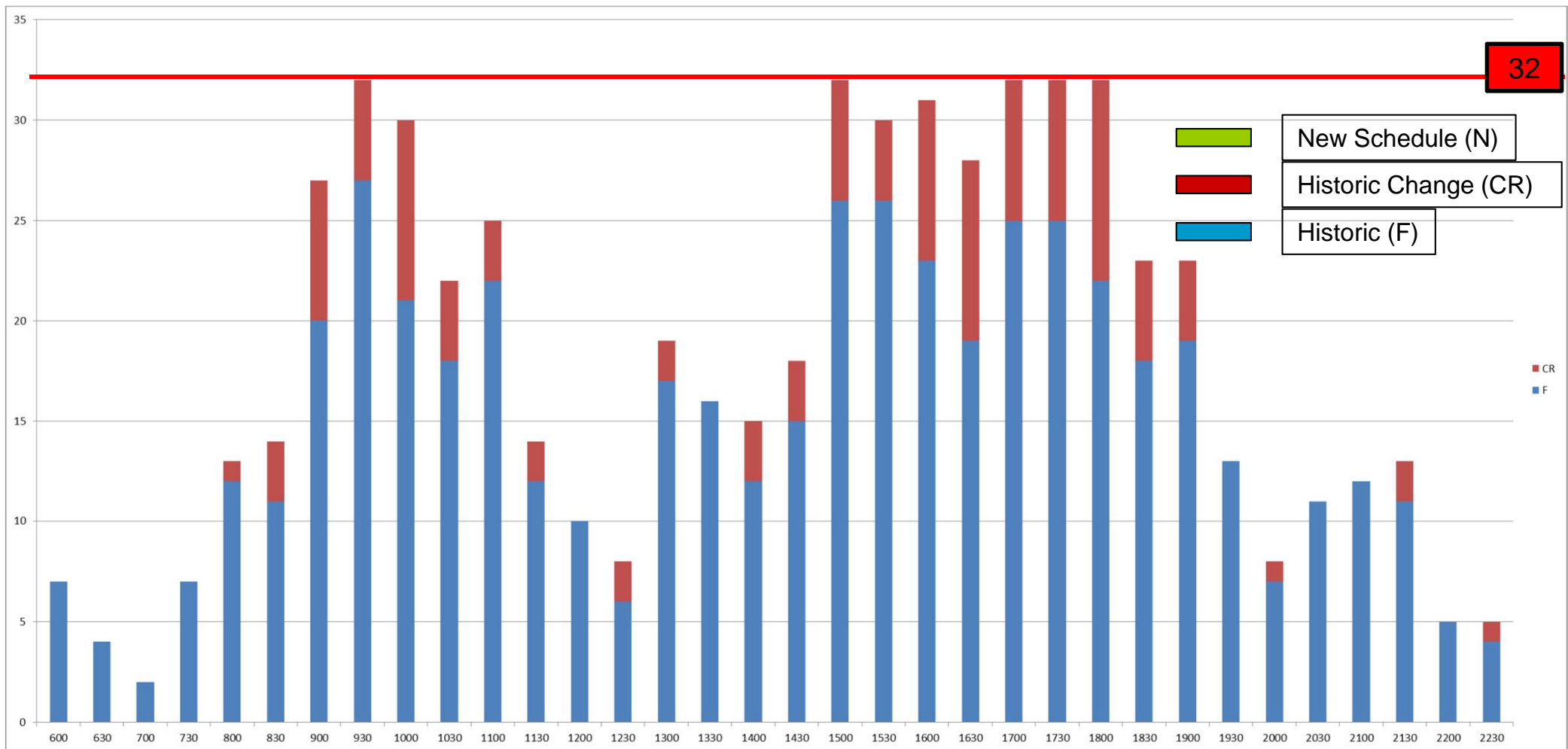
The number of slots overflown will be shifted to the next time band.

Whether to move forward or backward is based on the time where they were in (historic slots).

If the next time band is already full, then the nearest time band will be selected.

The result of First Step of Slot Allocation

At 9:30, 15:00, 17:00,17:30, 18:00;
They are full with “Historic Slots (F)” and “Changes to Historic Slots (CR)”



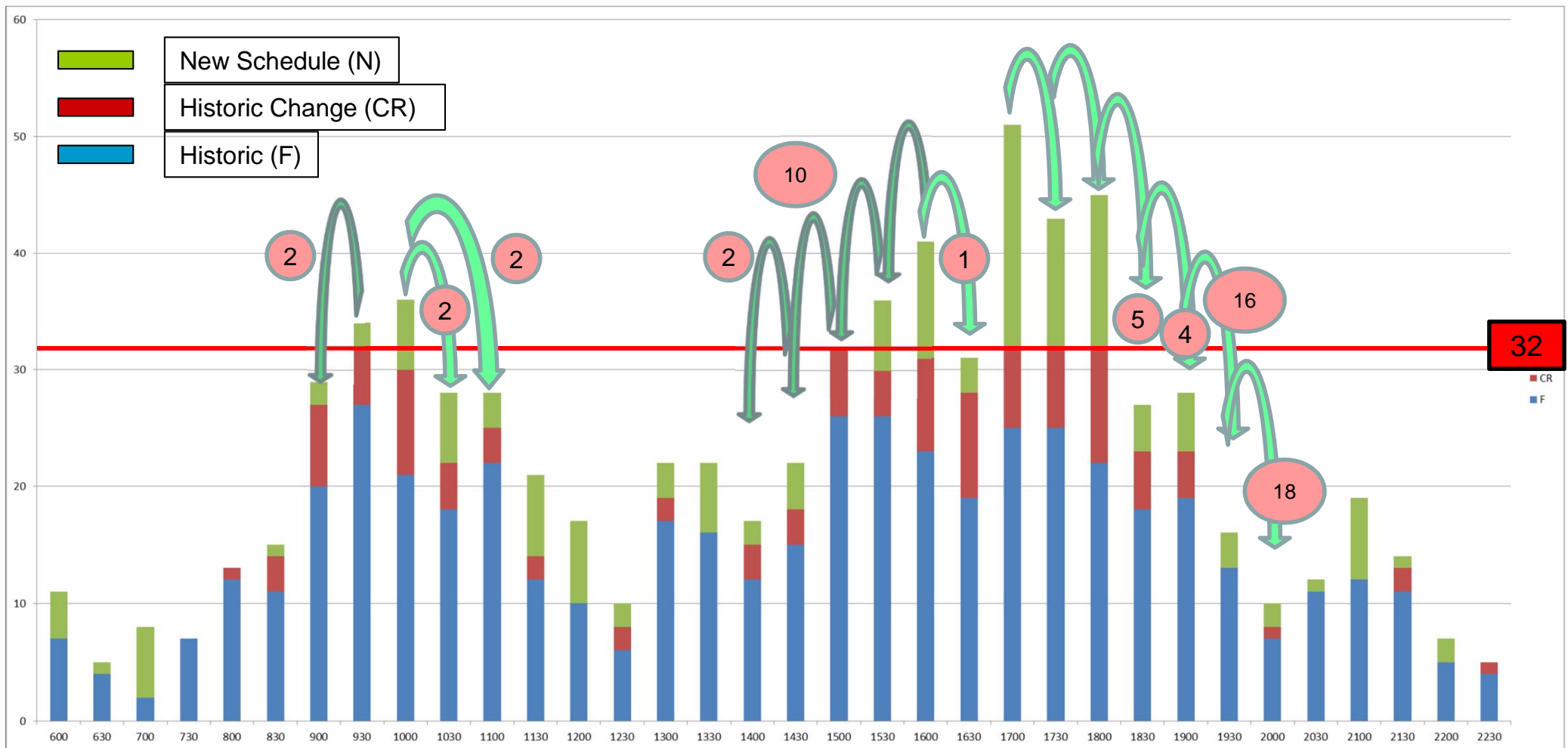
Once the “Historic Slots” and “Changes to Historic Slots” are settled within the maximum movement, then “New Schedule” from Slot Pool will be allocated.

Second Step of Slot Allocation

2

The number of slots moved

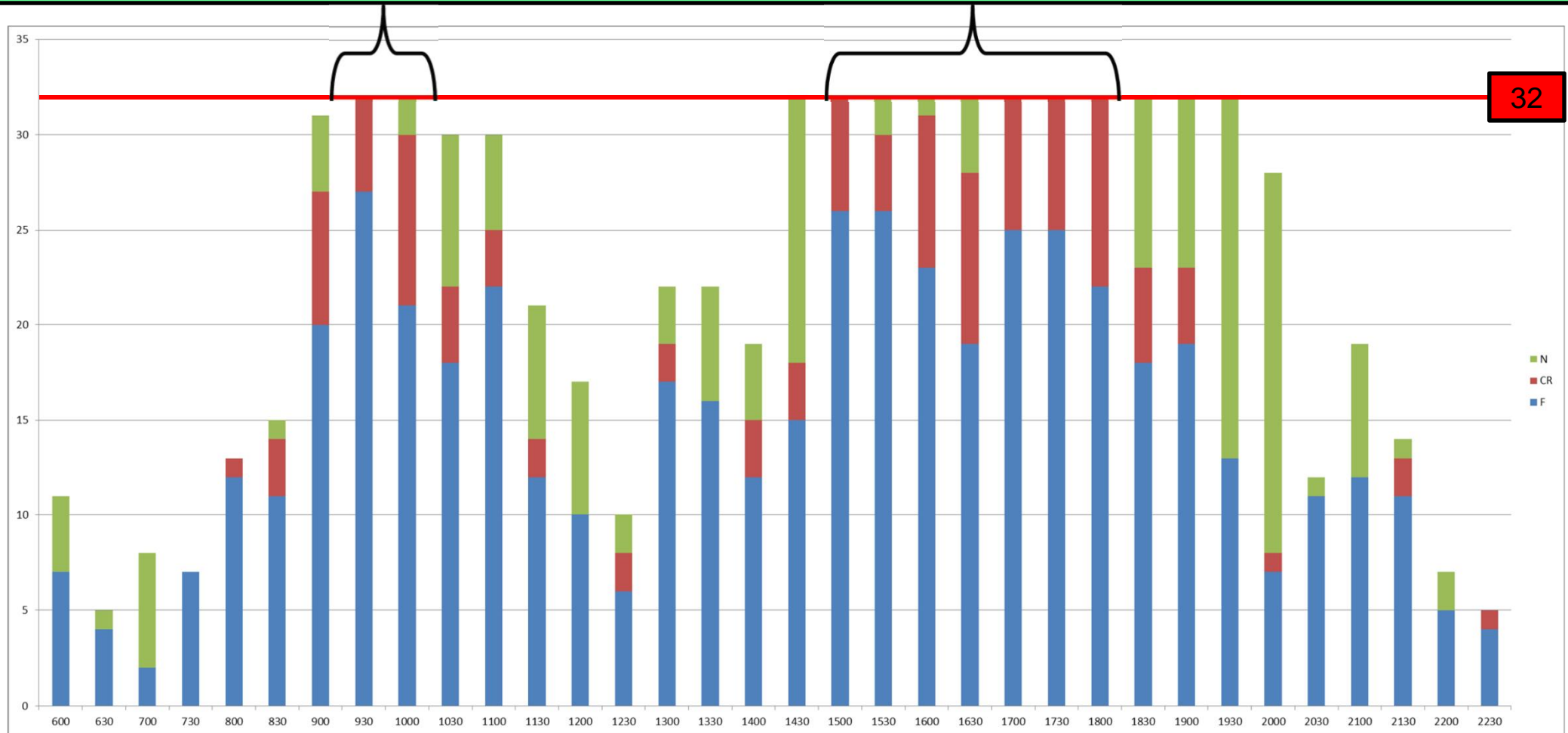
3rd Priority is “New Schedule (N)” from Slot Pool



“New Schedule” from Slot Pool will be allocated based on the priority of WSG.

The Result of Second Step of Slot Allocation

At 10:00, 14:30, 15:30, 16:00, 16:30, 18:30, 19:00, 19:30;
They are full with “Historic Slots (F)”, “Changes to Historic Slots (CR)” and “New Schedule (N)”



The priority in New Schedule (Slot Pool) is the New Entrant (8.3.5), Year Round Operations (8.3.6) and additional criteria (8.4) in WSG.
Now, everybody is happy with this initial slot allocation.



Slot Allocation with Revised WSG To be effective for W2020

Primary Criteria for Initial Slot Allocation with New WSG (1)

8.3.2 Historic Slots

-The first priority of slot allocation is historic slots requested as unchanged or with changes that do not impact the coordination parameters (for example, a change in flight number). These slot requests are referred to herein as unchanged historic slots. For changes to historic slots that impact the coordination parameters (for example, a change in timing), airlines and other aircraft operators should clearly indicate the range of flexibility they are prepared to accept (if any) using the appropriate industry codes and format in their submission. For any requested changes that cannot be allocated within the applicable flexibility range, the coordinator should reallocate the unchanged historic slots to the airline or other aircraft operator concerned.

8.3.3 Slot Pool

- Once unchanged historic slots have been allocated, the coordinator will establish a slot pool, including any newly created slots.
- The coordinator will treat new entrant requests, non new entrant requests, and requests for changes to historic slots holistically and fairly across the day, using primary and, if necessary, additional criteria for initial slot allocation set forth in these guidelines.
- 50% of the slots contained in the pool at initial slot allocation must be allocated to new entrant requests in accordance with 8.3.4 below, unless new entrant requests are less than 50%. Similarly, 50% of the slots contained in the pool at initial slot allocation must be allocated to non-new-entrant requests, unless such requests are less than 50%.
- Where this 50/50 balance is not achievable in a single season (for example, where there is a very limited number of slots available in the pool), the coordinator should correct this imbalance over the next equivalent season (or seasons, if that is not possible) to ensure that the pool is allocated equitably to both new entrants and non-new new-entrants.

Primary Criteria for Initial Slot Allocation with New WSG (2)

8.3.4 New Entrants

- Only airlines are eligible for new entrant status.
- A new entrant that has been offered slots within one hour before or after the time requested, but does not accept this offer by the end of the first day of the SC, will not retain new entrant status for that season.
- If a new entrant is dissatisfied with the response from the coordinator to its slot request, then it may ask for meeting of the Coordination Committee to seek to resolve the situation.

8.3.5 Introduction of Year Year-Round Operations

- Within each category (new entrant requests, non-new-entrant requests, and requests for changes to historic slots), a request to extend an existing operation to operate on a year-round basis should have priority over a new slot request.
- In evaluating whether the year-round priority applies, coordinators should allow flexibility on timings to cater for the differing requirements of short- and long-haul services.

8.4 ADDITIONAL CRITERIA FOR INITIAL SLOT ALLOCATION

-When slots cannot be allocated using the primary criteria as set out in 8.3 above, consideration should be given to the following factors (in no particular order):

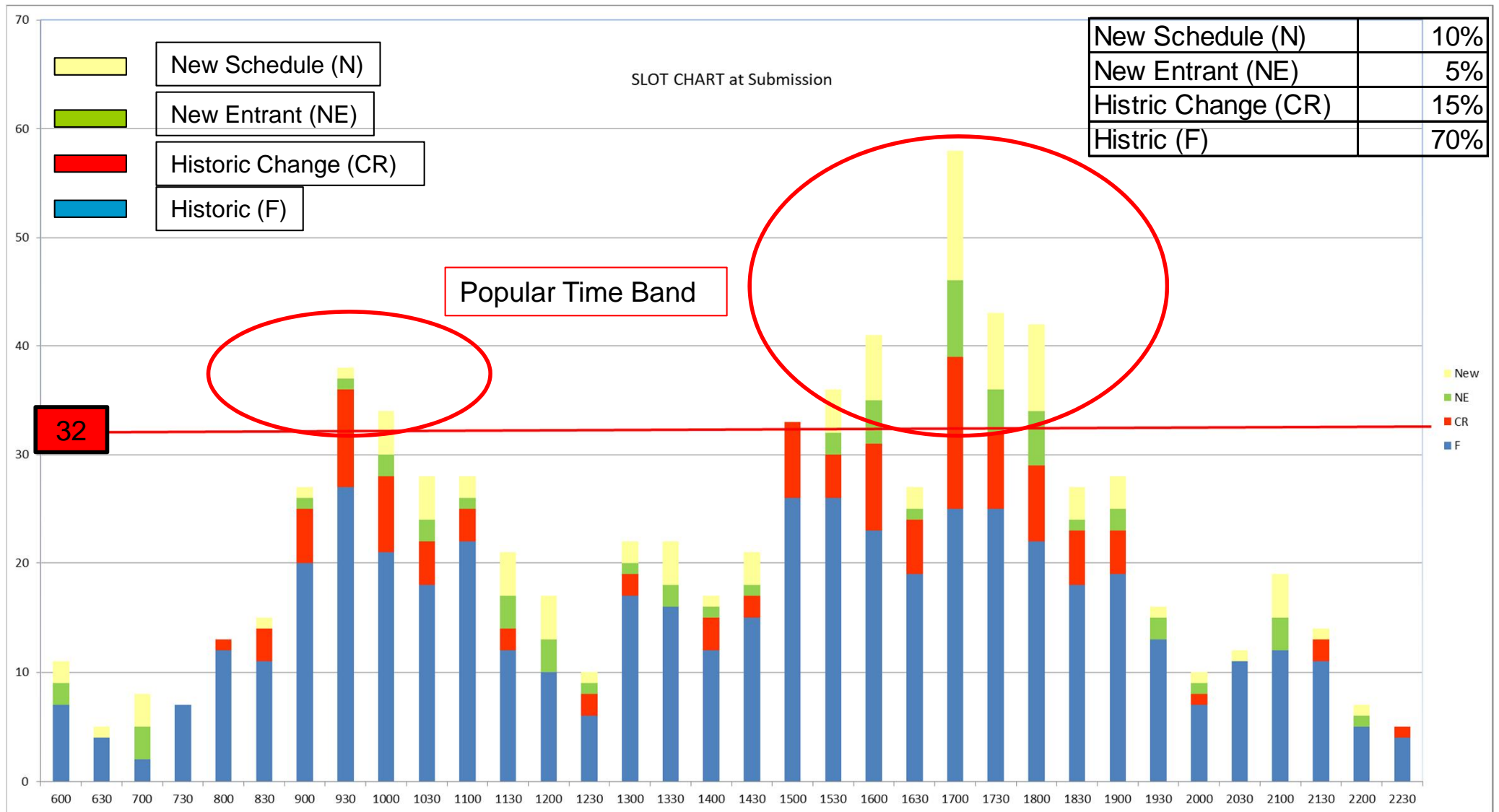
- a) Effective Period of Operation: b) Curfews: *c) Time Spent on Waitlist: d) Type of Service and Market: e) Competition: f) Requirements of the Travelling Public and Other Users: g) Frequency of Operation: h) Local Guidelines:

*c) will be effective from 1 August, 2019

11. TERMS AND ABBREVIATIONS

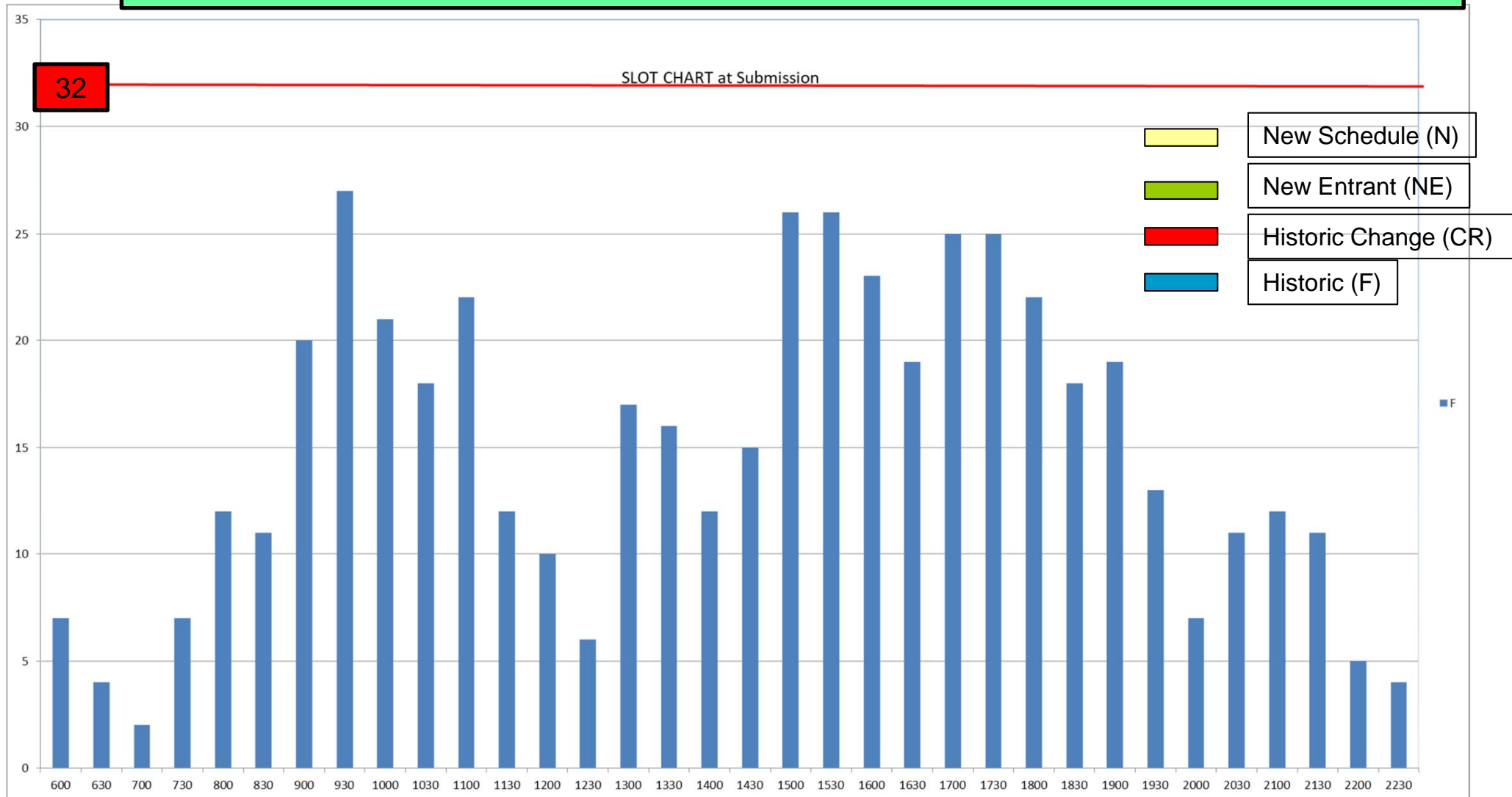
New Entrant: an airline requesting a series of slots at an airport on any day where, if the airline's request were accepted, it would hold fewer than 7 slots at that airport on that day. In other words, an airline could schedule 3 rotations per day (3 arrivals and 3 departures, requiring 6 slots) as a new entrant.

Request Distribution at Initial Submission



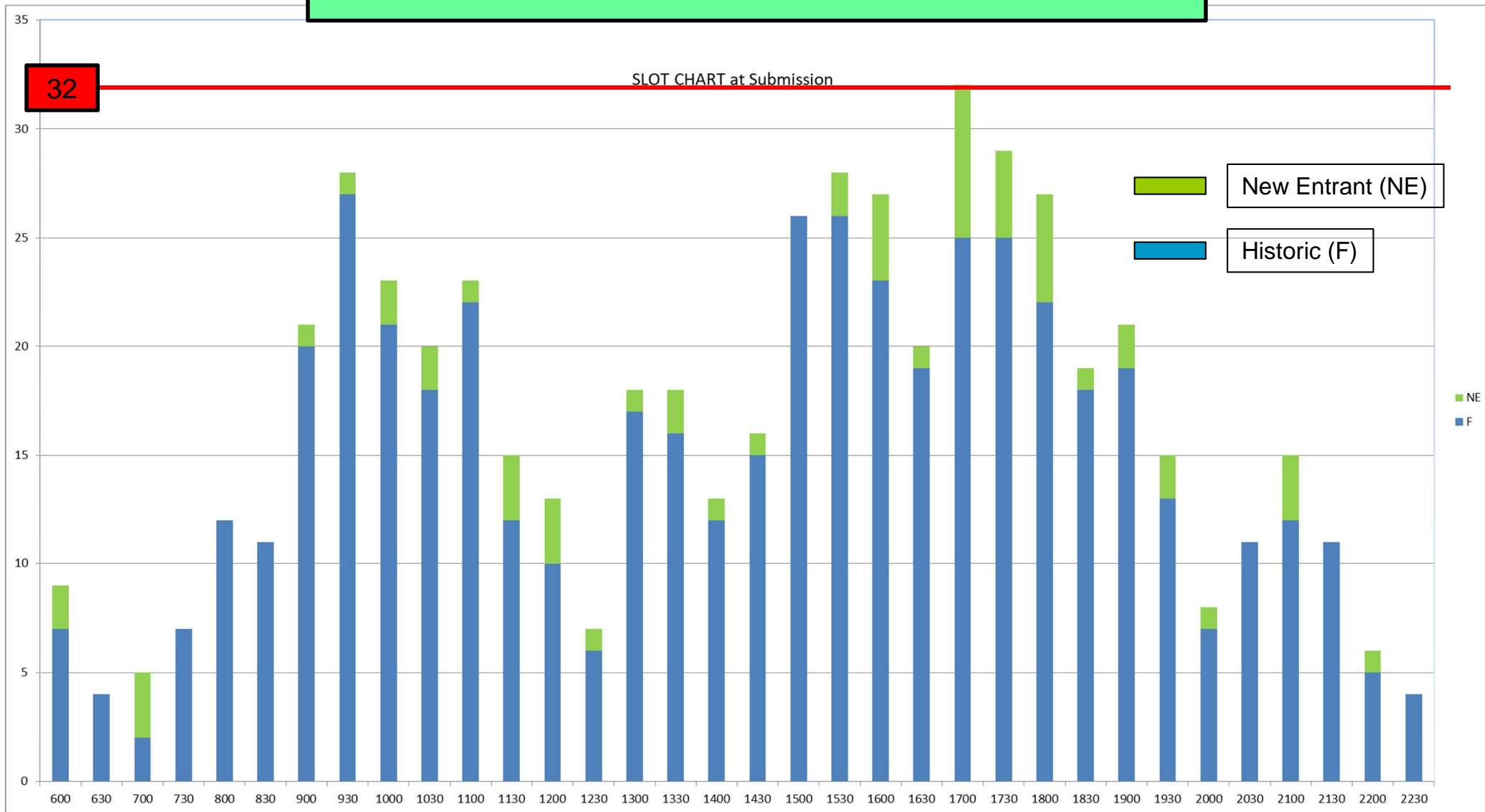
First Step of Slot Allocation

New Schedule(N), New Entrant (NE) and Historic Change (CR) will be taken out.
1st Priority is “Historic Slots (F)”.



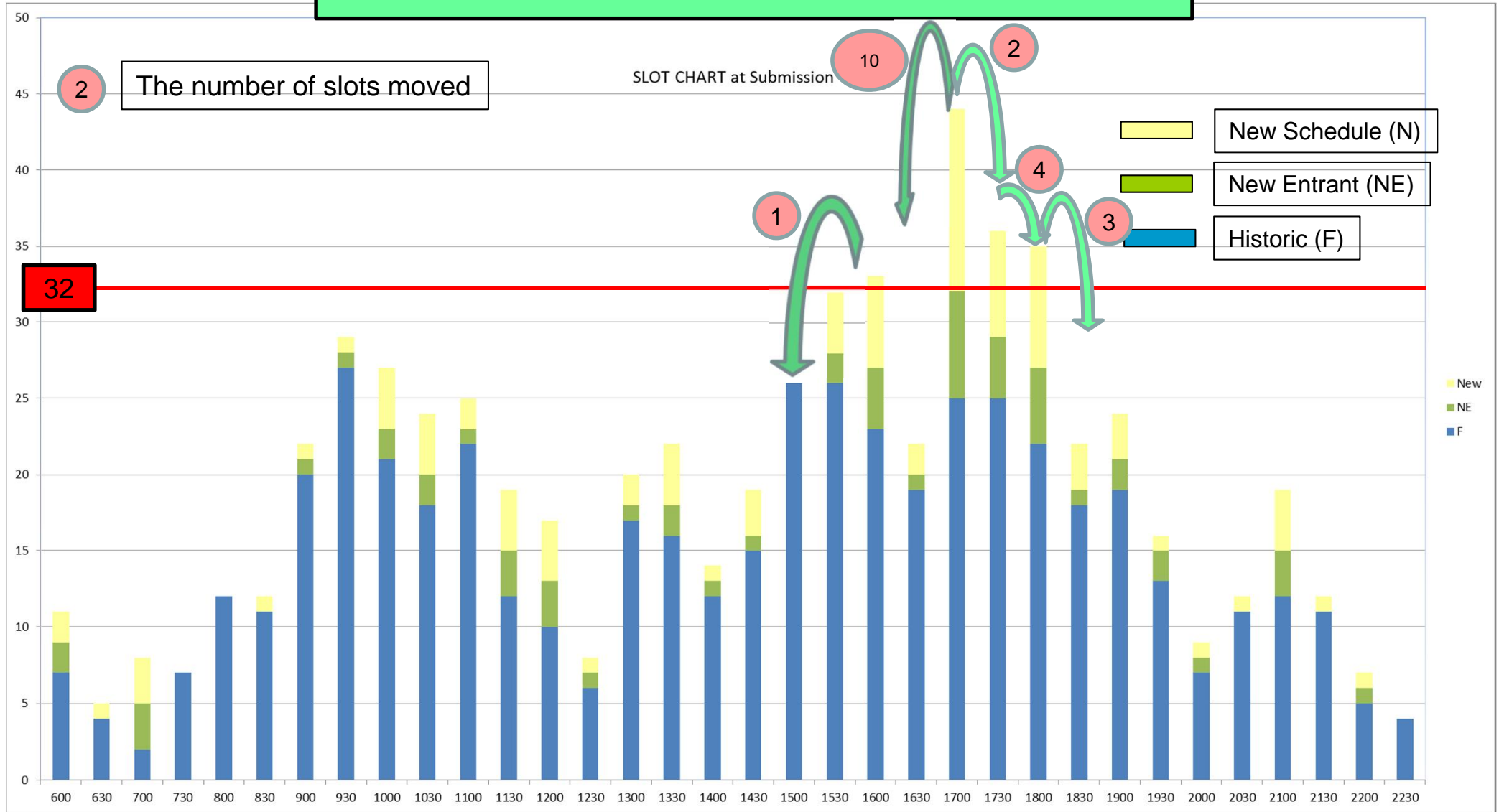
Second Step of Slot Allocation

2nd “New Entrant (NE)” will be added from Slot Pool.



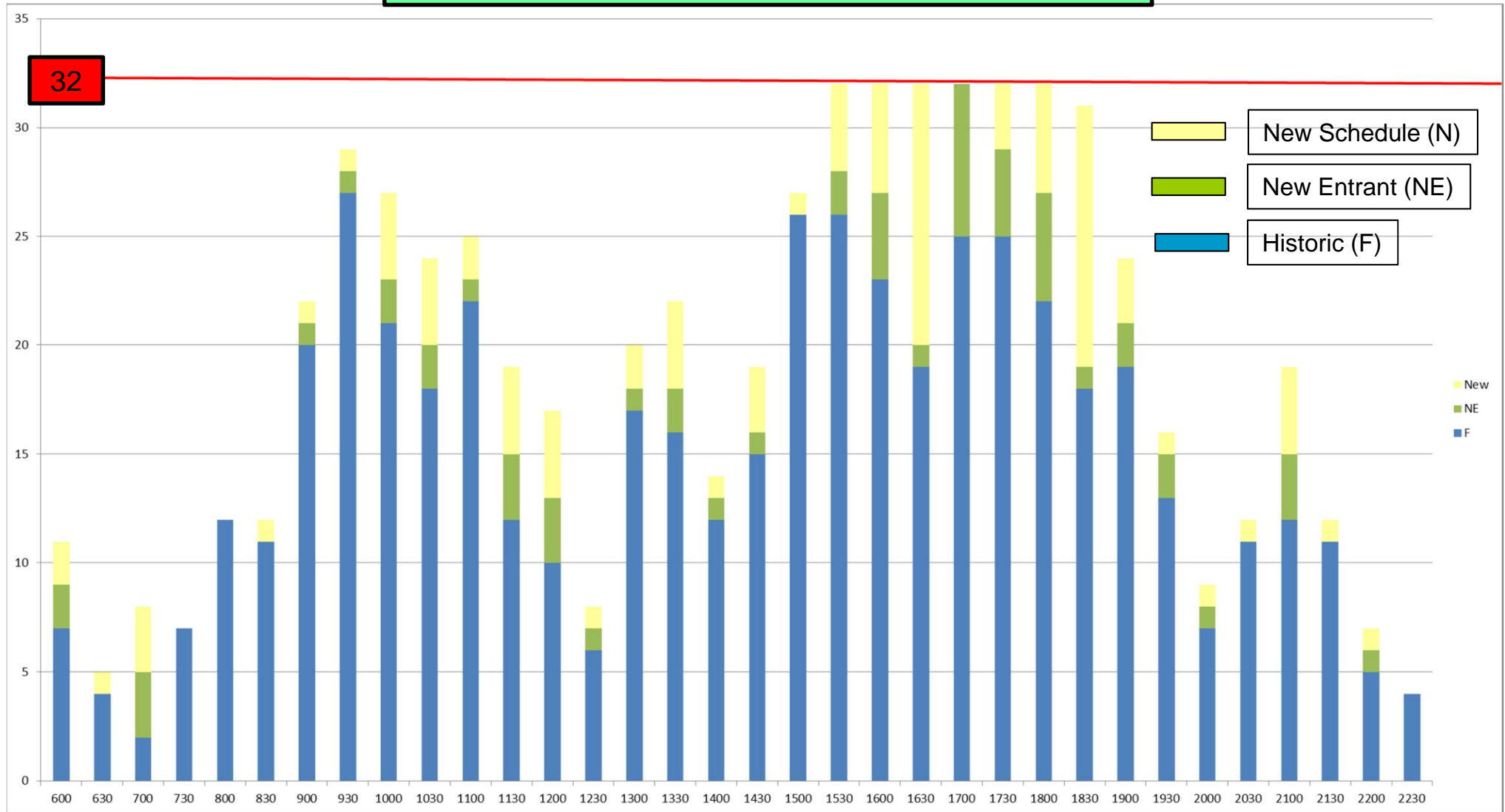
Third Step of Slot Allocation

3rd "New Schedule (N)" will be added from Slot Pool.



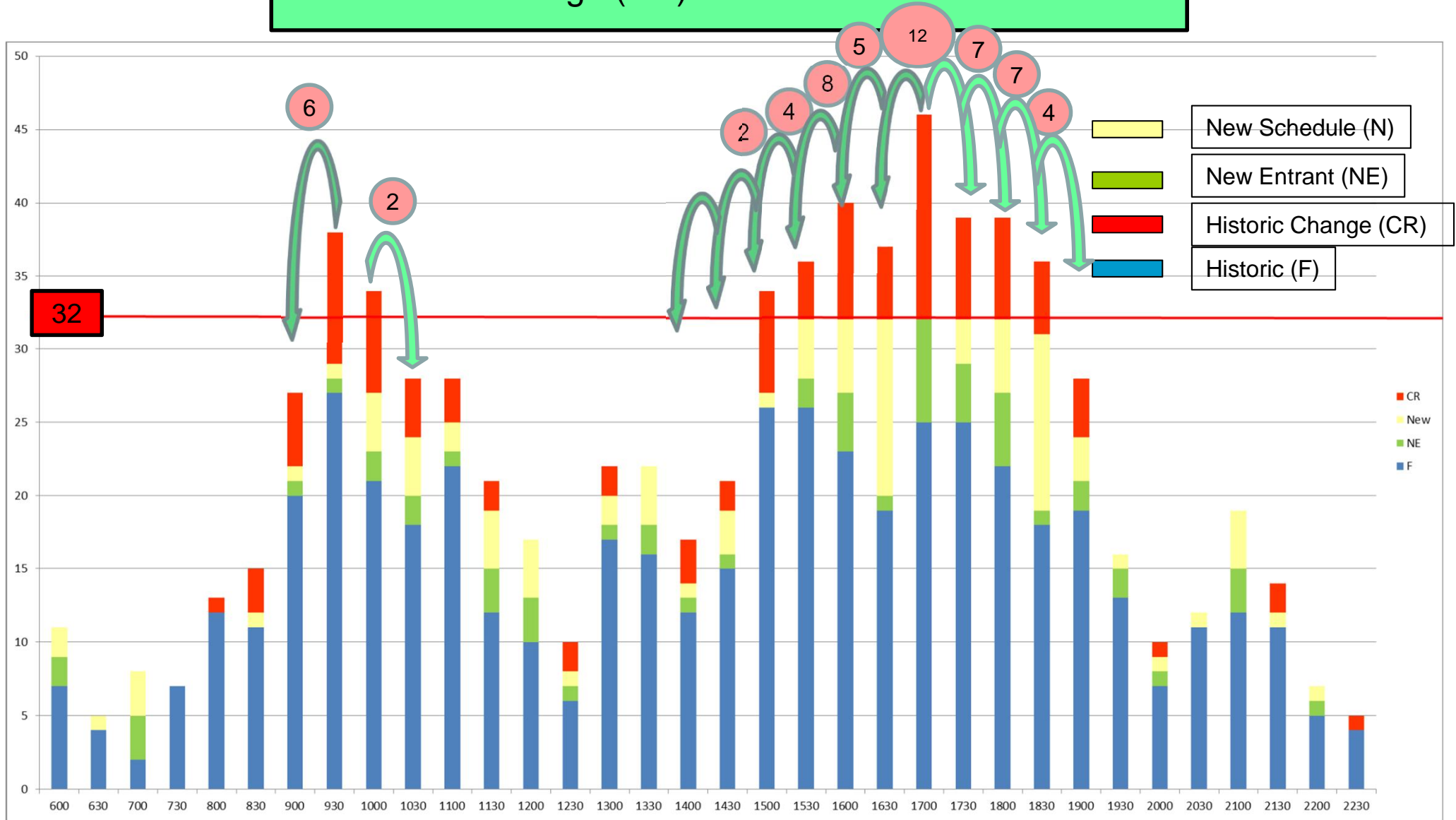
Forth Step of Slot Allocation

4th "New Schedule (N)" will be allocated.



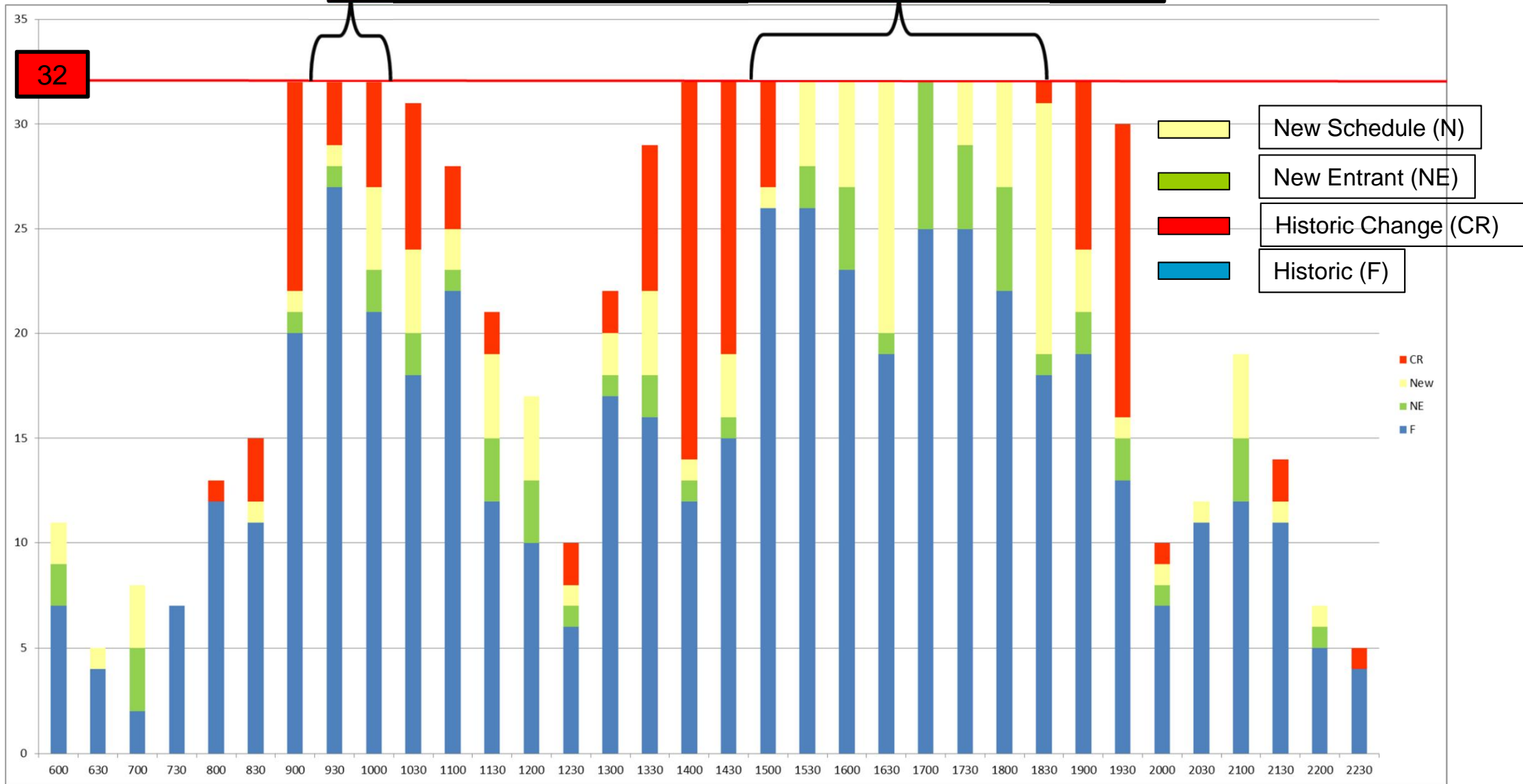
Fifth Step of Slot Allocation

5th "Historic Change (CR)" will be added from Slot Pool.



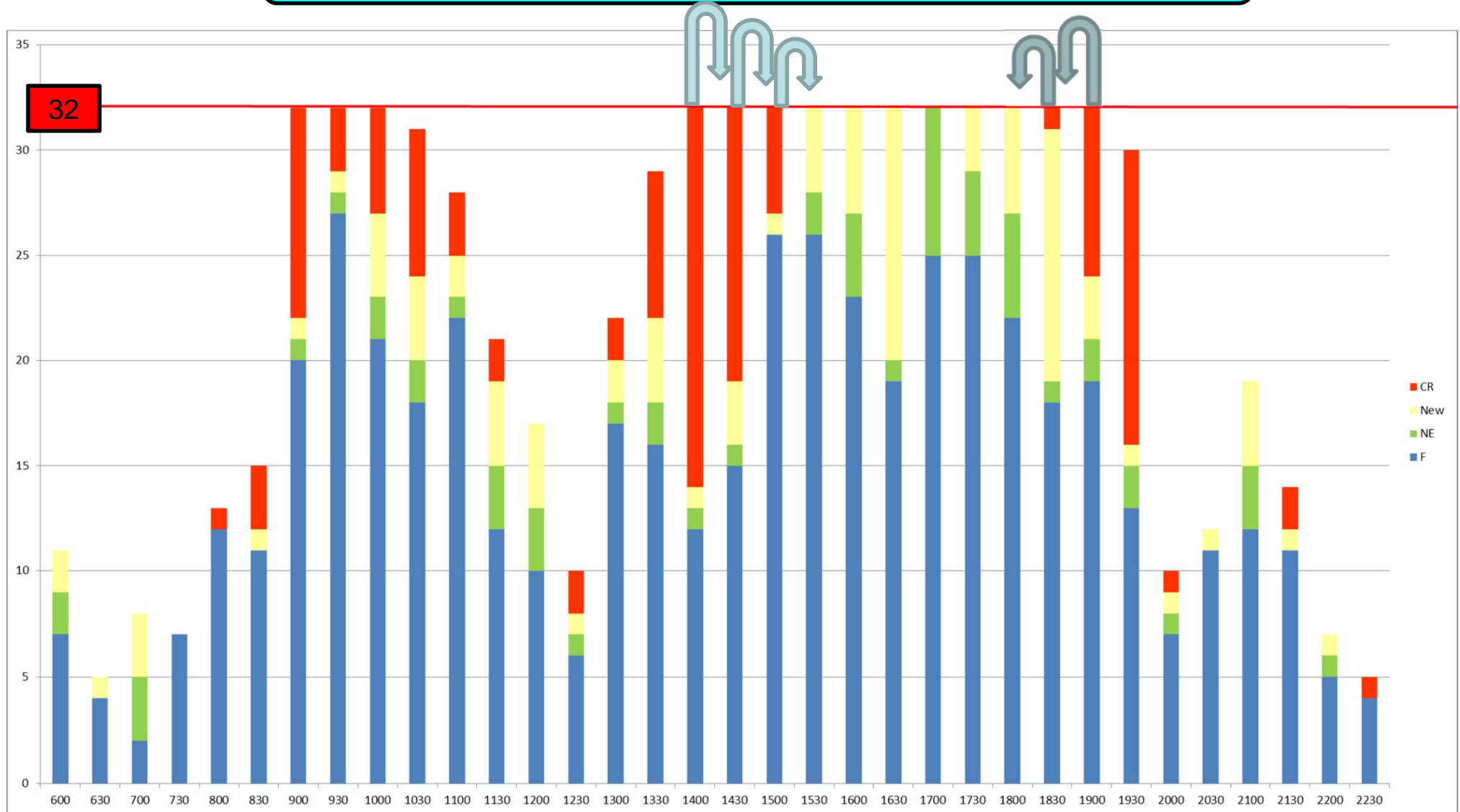
Sixth Step of Slot Allocation

6th "Historic Change (CR)" will be allocated.



This is the end of slot allocation if the historic change requests don't indicate the flexibility range.

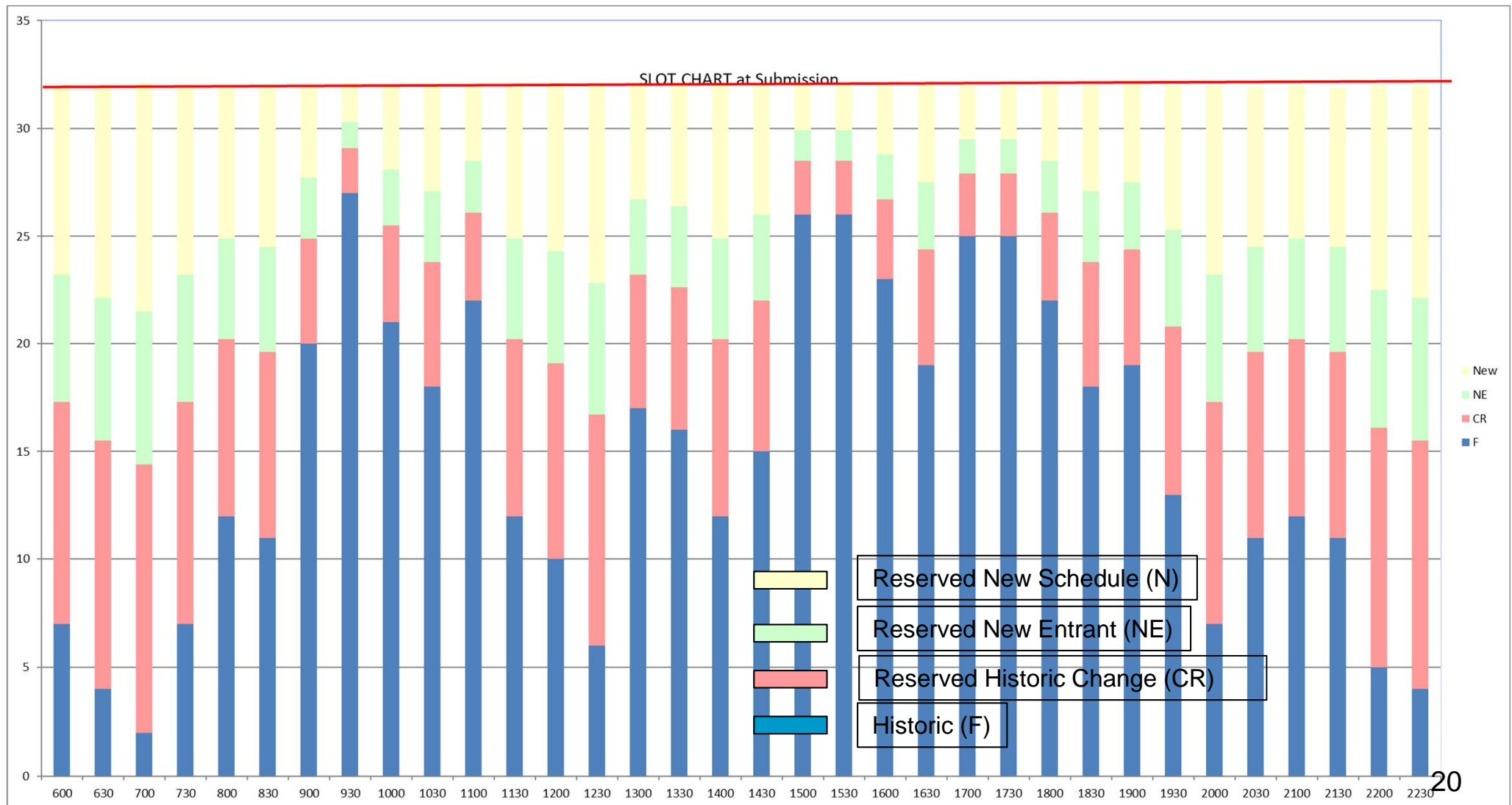
Seventh Step of Slot Allocation



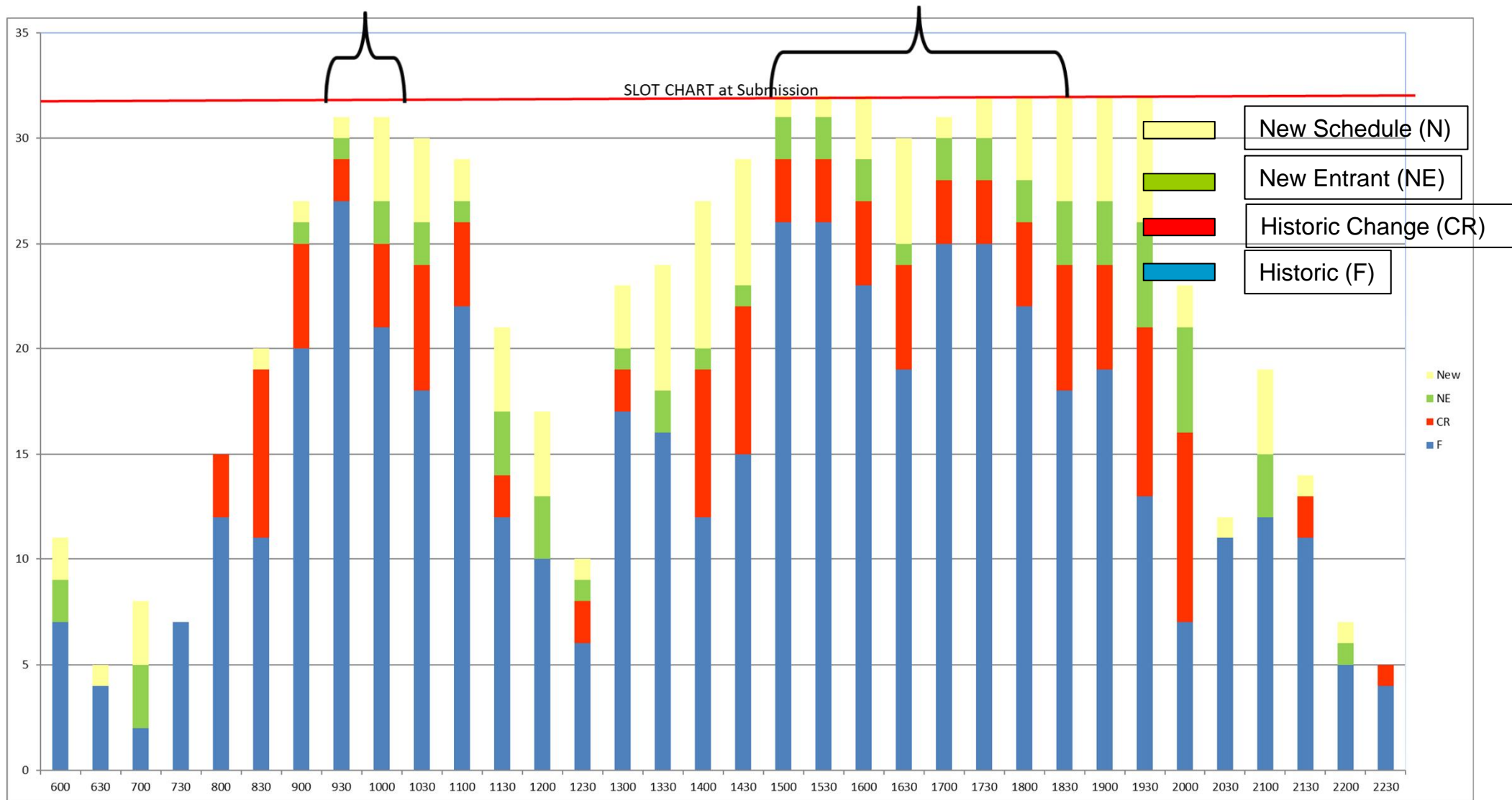
If the historic change requests indicate the flexibility range and allocated slots don't satisfy this flexibility range, then they will go back to unchanged historic slots. The reallocation of new entrant, non-new entrant requests will start again.

Another Option of Slot Allocation (1)

1st After unchanged historic slots are allocated, slot pool at each time range will be reserved in advance for New Entrant, Non-New Entrant and Historic Change in proportion to the requested share.



Another Option of Slot Allocation (2)



Though JSC does not figure out exactly how to allocate those slots, it seems the allocation of New Entrant, non-New Entrant and Historic Change is balanced.