

Delhi Airport - The COVID Impact

**APACA Meeting
June 2021**

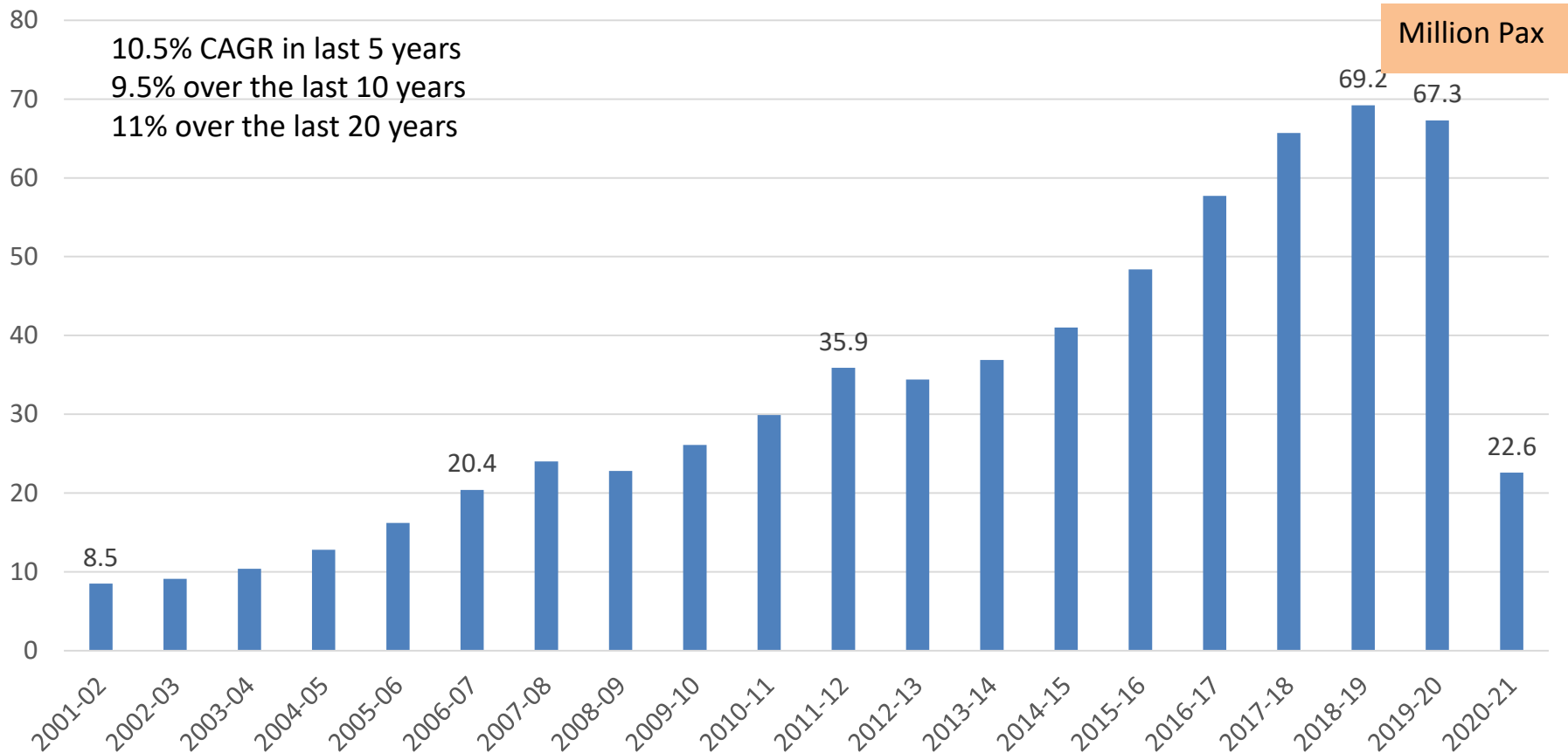


COVID-19:

‘Adapting to a New Normal at Delhi Airport’

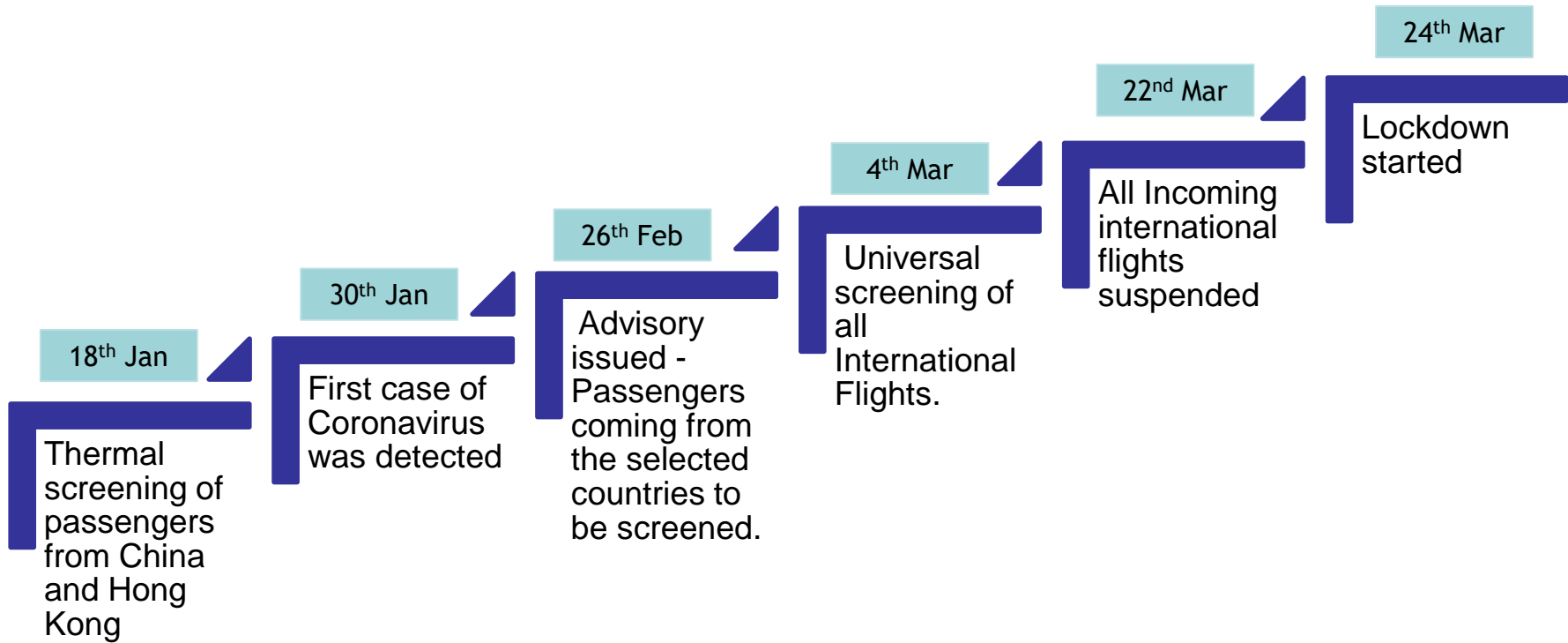


Passenger Traffic over the years



Indian Aviation started experiencing flight cancellations due COVID in January 2020.

It all started in Jan- Mar 2020



Coronavirus outbreak: Airports start stringent screening to check spread

All thanks to several doctors on standby, the queues of fliers

India starts screening passengers from Singapore, Thailand

Coronavirus: All international arrivals to India to share travel history at airports

ET Bureau

2020, 02:25 PM IST

SHARE FONT SIZE SAVE PRINT

PM Narendra Modi announces a national lockdown for 21 days starting midnight of 24-25 March

These 21 days are crucial to mitigate the spread of the disease and that the decision was taken after consulting with various health experts and WHO.

हिंदी न्यूज़ > देश > कोरोना वायरस: चीन की मंजूरी के बाद भारतीयों को वापस लाने 26 फरवरी को विमान बुहान भेजेगा भारत

कोरोना वायरस: चीन की मंजूरी के बाद भारतीयों को वापस लाने 26 फरवरी को विमान बुहान भेजेगा भारत

एजेंसी, नई दिल्ली | Published By: Ashutosh

Last updated: Tue, 25 Feb 2020 01:45 AM

The Wuhan Evacuation



the airside fiasco

- Flights suspension period brought in a lot of additional aircraft on ground .
- ~ 50 additional aircraft were parked on the airfield.
- Additional aircraft were parked on a Taxiway and a runway when parking stands were full.
- Reduction in traffic also reduced the Runway requirement .
- Two runways 10/28 & 11/29 were kept operational and Rwy 09/27 was closed for operations .



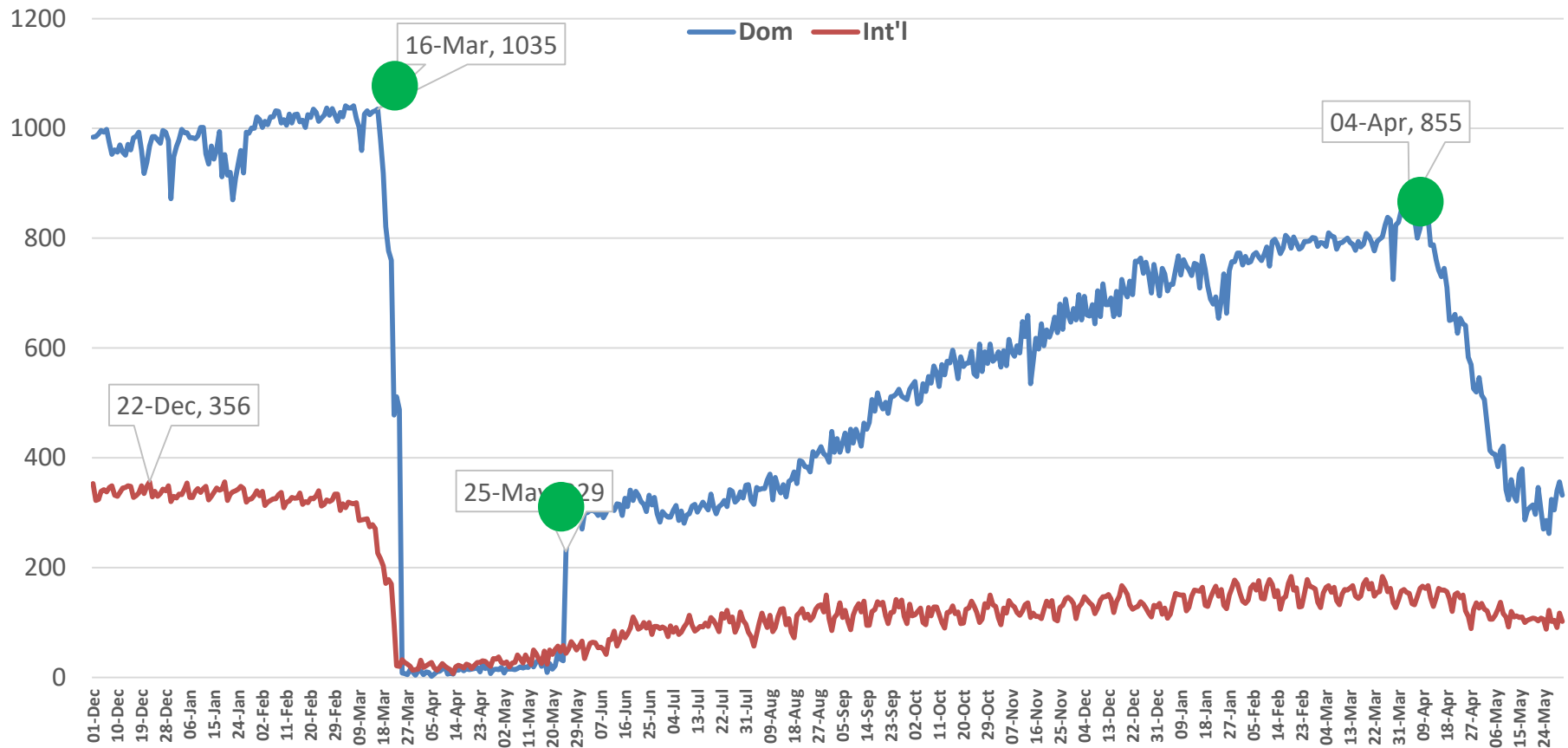
Not the Place to Be



Aircraft bulk parked on RWY 27/09.
The aircraft were secured and
readied for temporary preservation.



COVID waves reflection on aviation traffic



Domestic ATMs peaked to 1035 on 16 Mar 2020 before down sliding and came to a halt on 25th Mar 2020 upon imposition of nation level lockdown.

International traffic started declining from the 3rd week of January 2020 and passenger flights were closed on 22nd March. The only exception was cargo ops and rescue/evacuation flights.

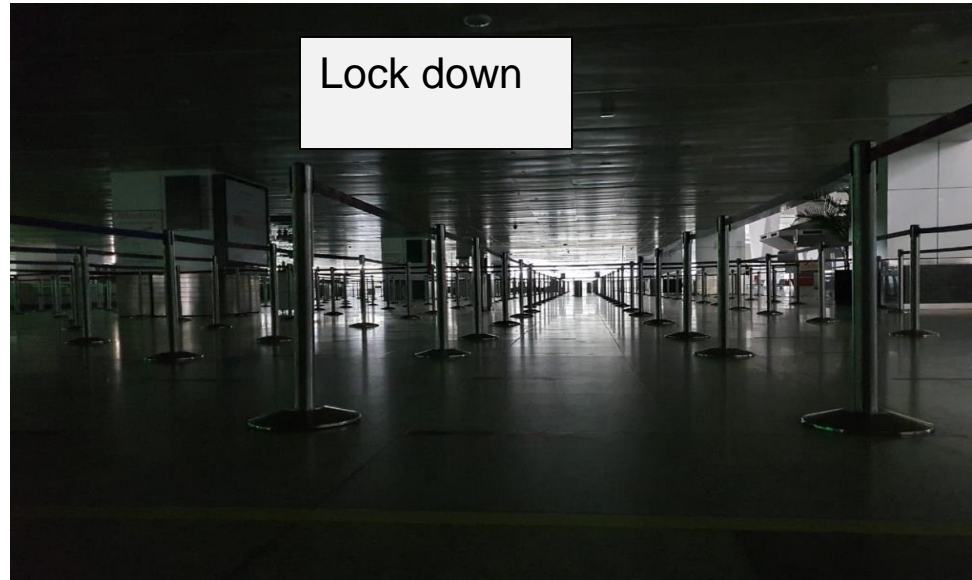
AI started Vande Bharat in May'20 and Air Bubble were introduced in Oct'20 and still continuing.

Bustling airport to ghost terminals

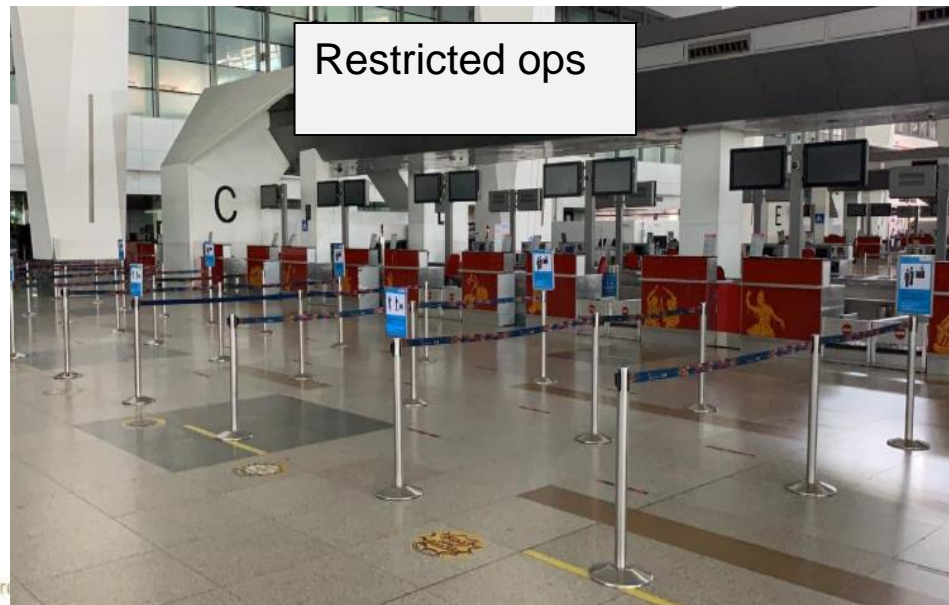
Pre COVID



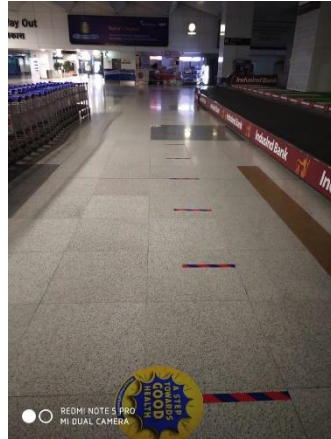
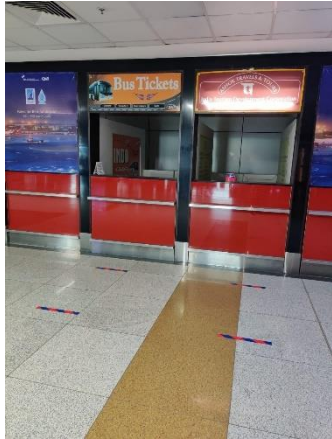
Lock down



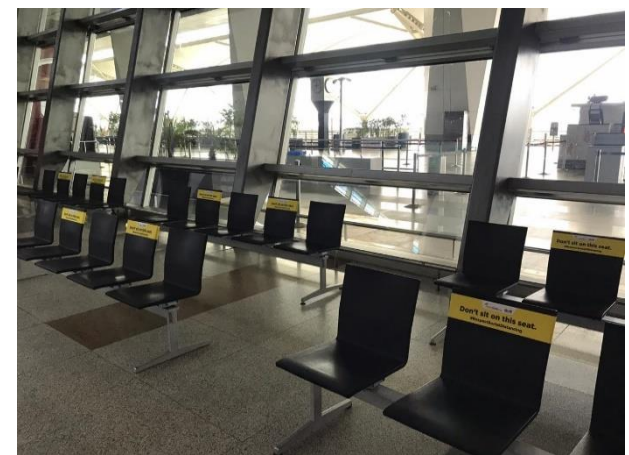
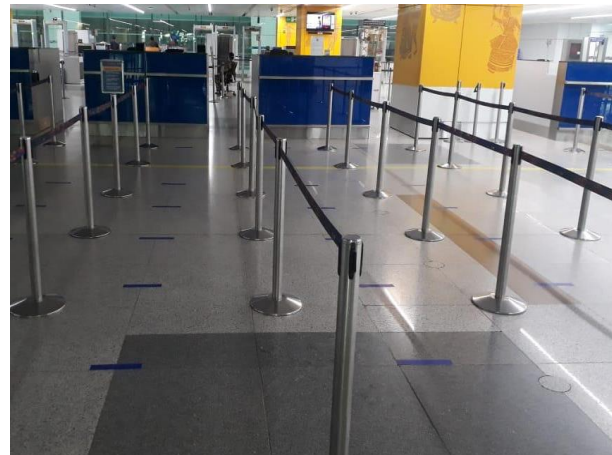
Restricted ops



Passenger Safety & Communication Social Distancing Measures



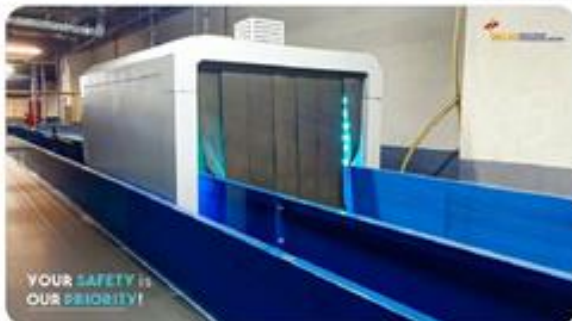
- All areas on kerbside and in-terminal have floor markings to aid 4-6 ft distance among passengers
- Marking on seating to maintain social distancing



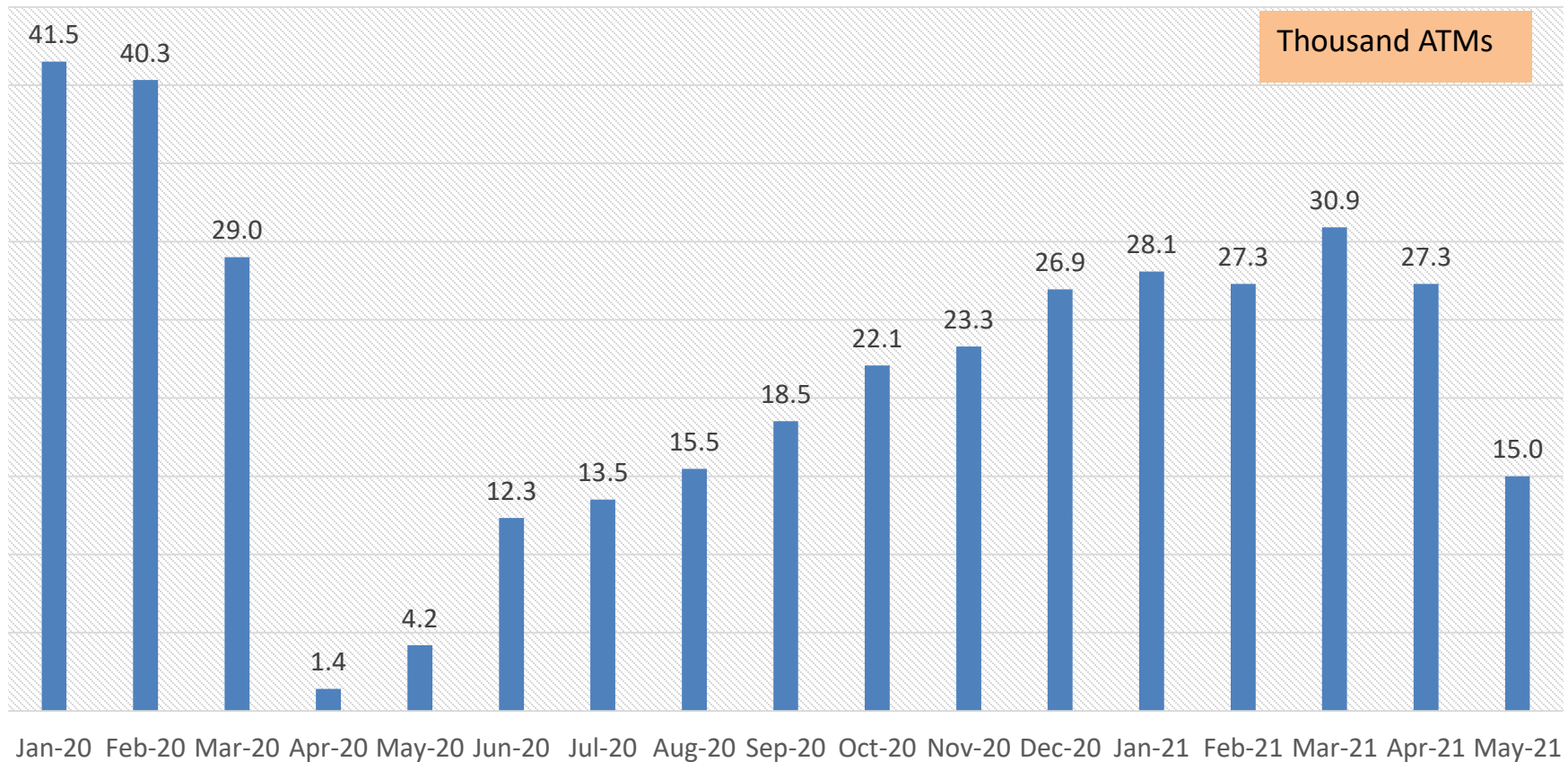
COVID19 Response – Passenger focus



A slew of measures have been introduced for a safe passenger experience and improving confidence in flying

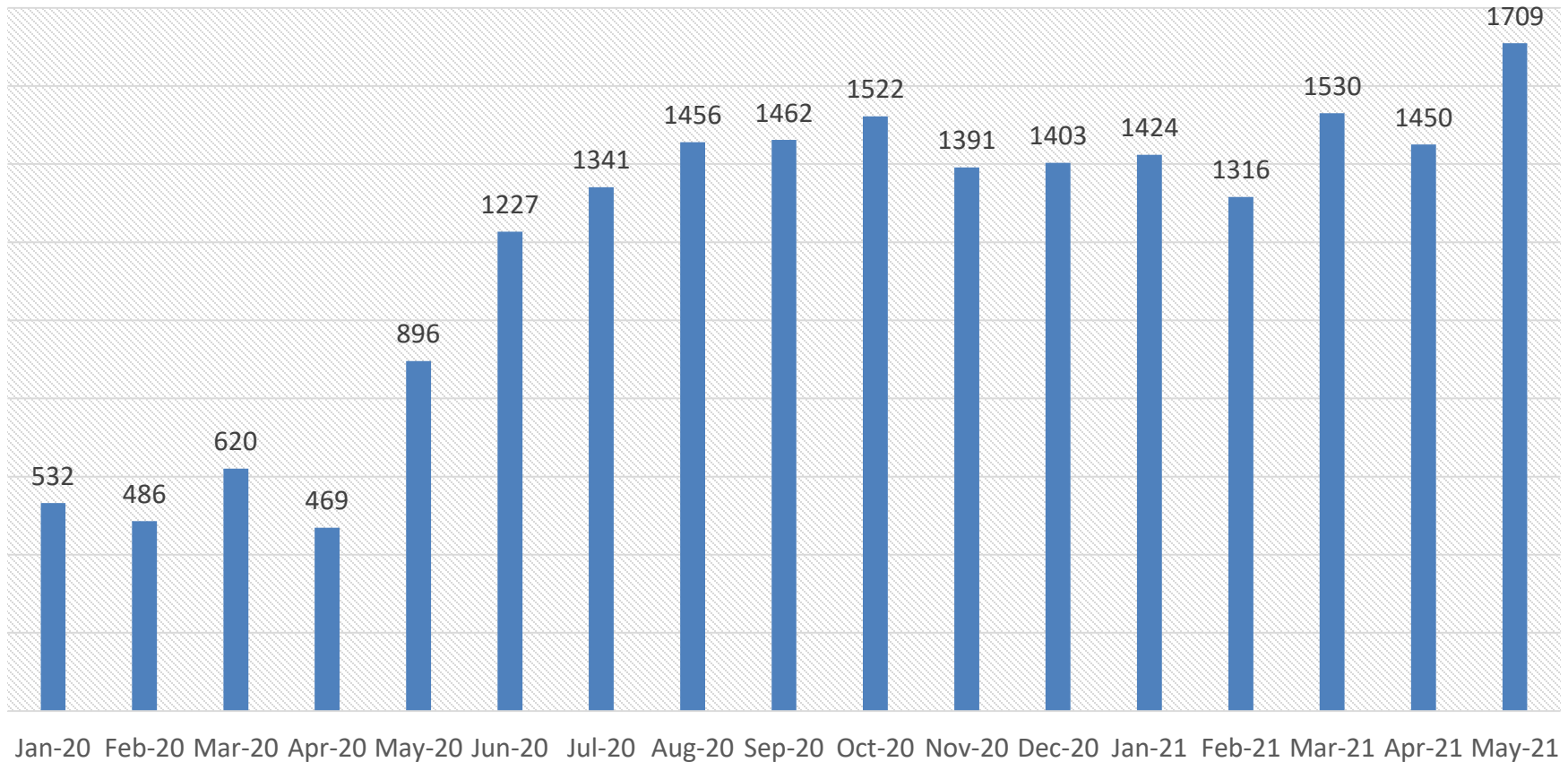


Air traffic movements – pre and post covid



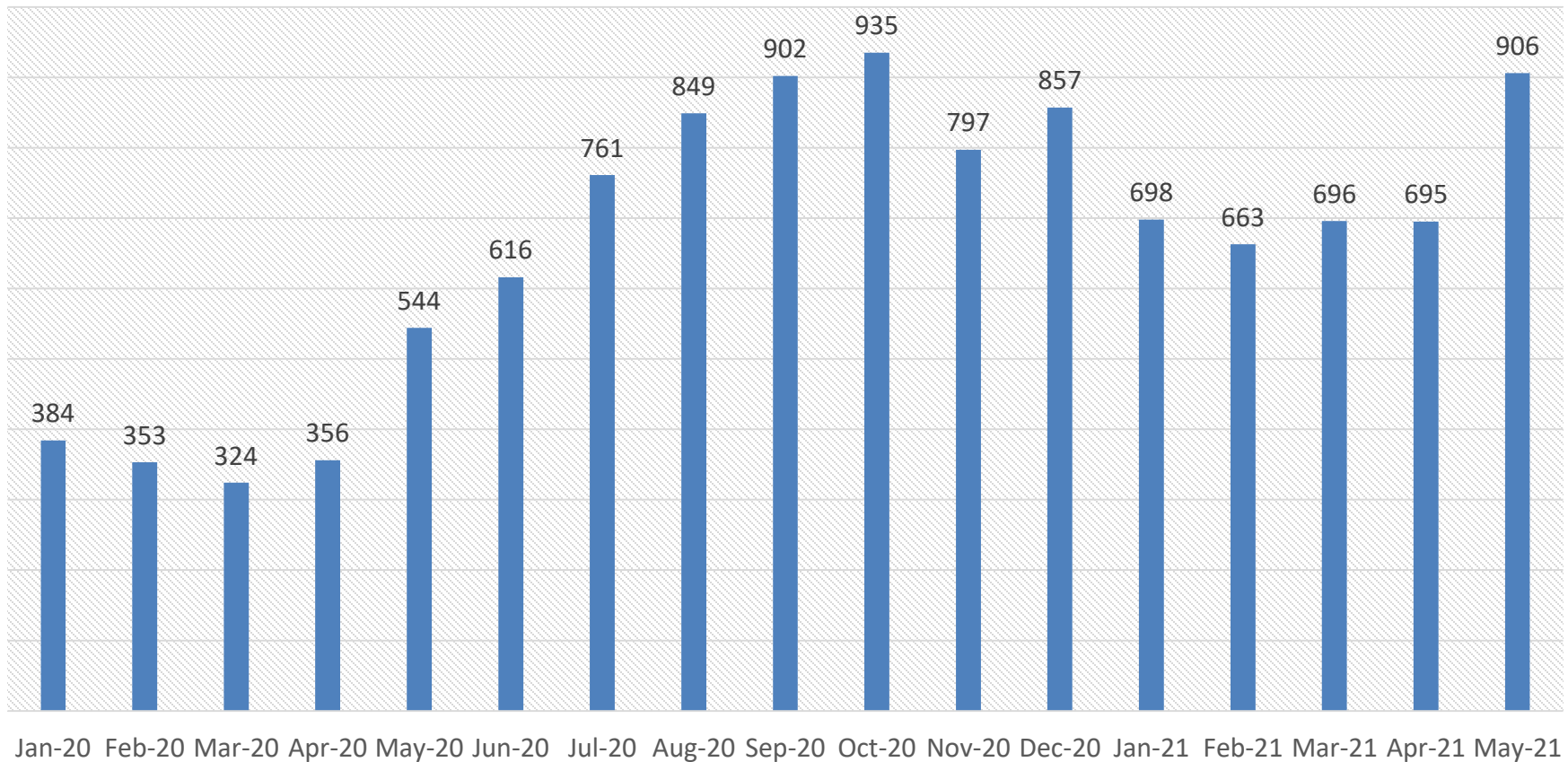
Indian Aviation started experiencing flight cancellations due COVID in January 2020.

International cargo flights



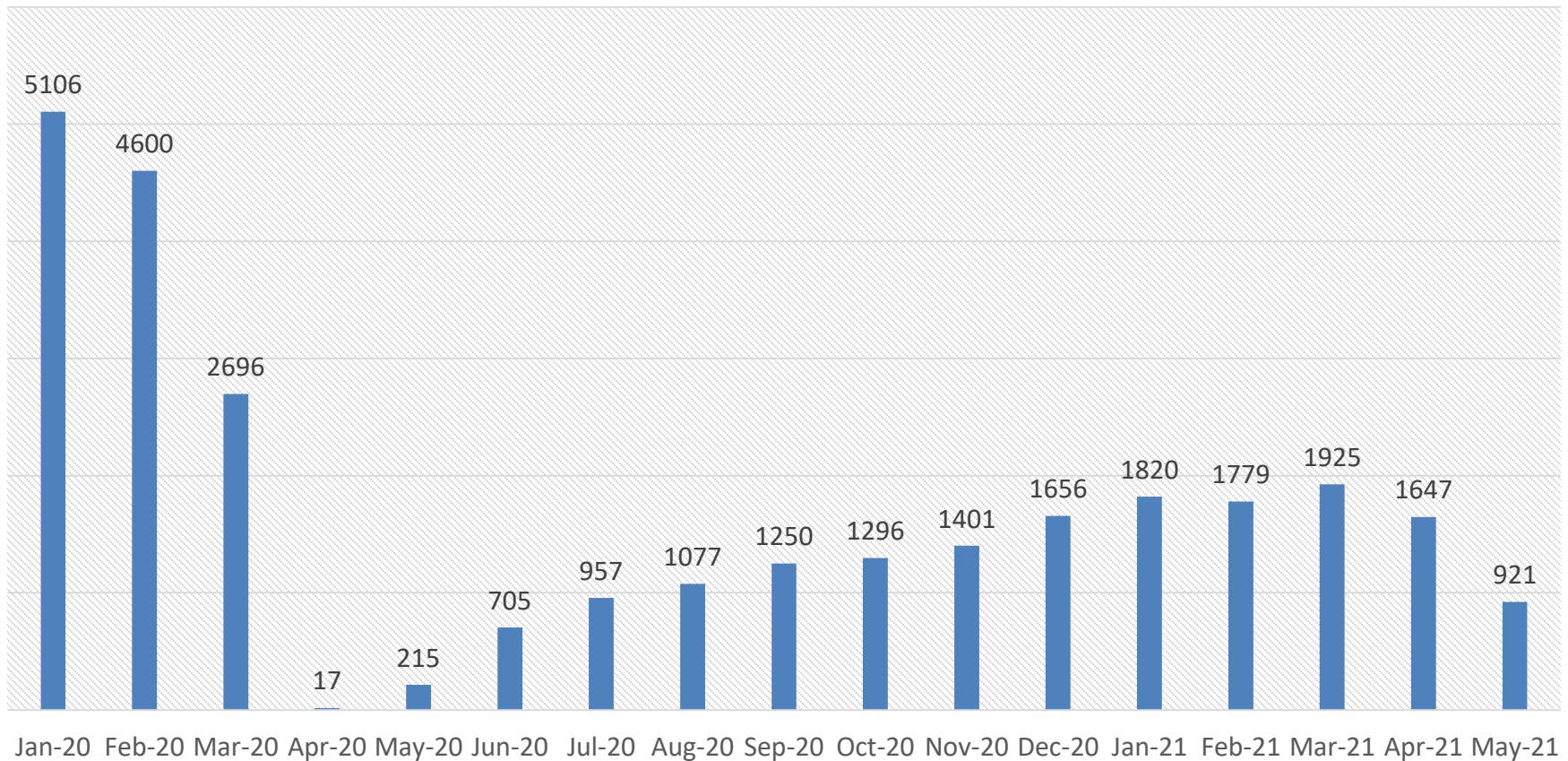
While the pax flights witnessed a sharp decline, there was a tremendous increase in Cargo operations. This was mainly due to shipment of medicines and medical relief material.

Domestic Cargo flights



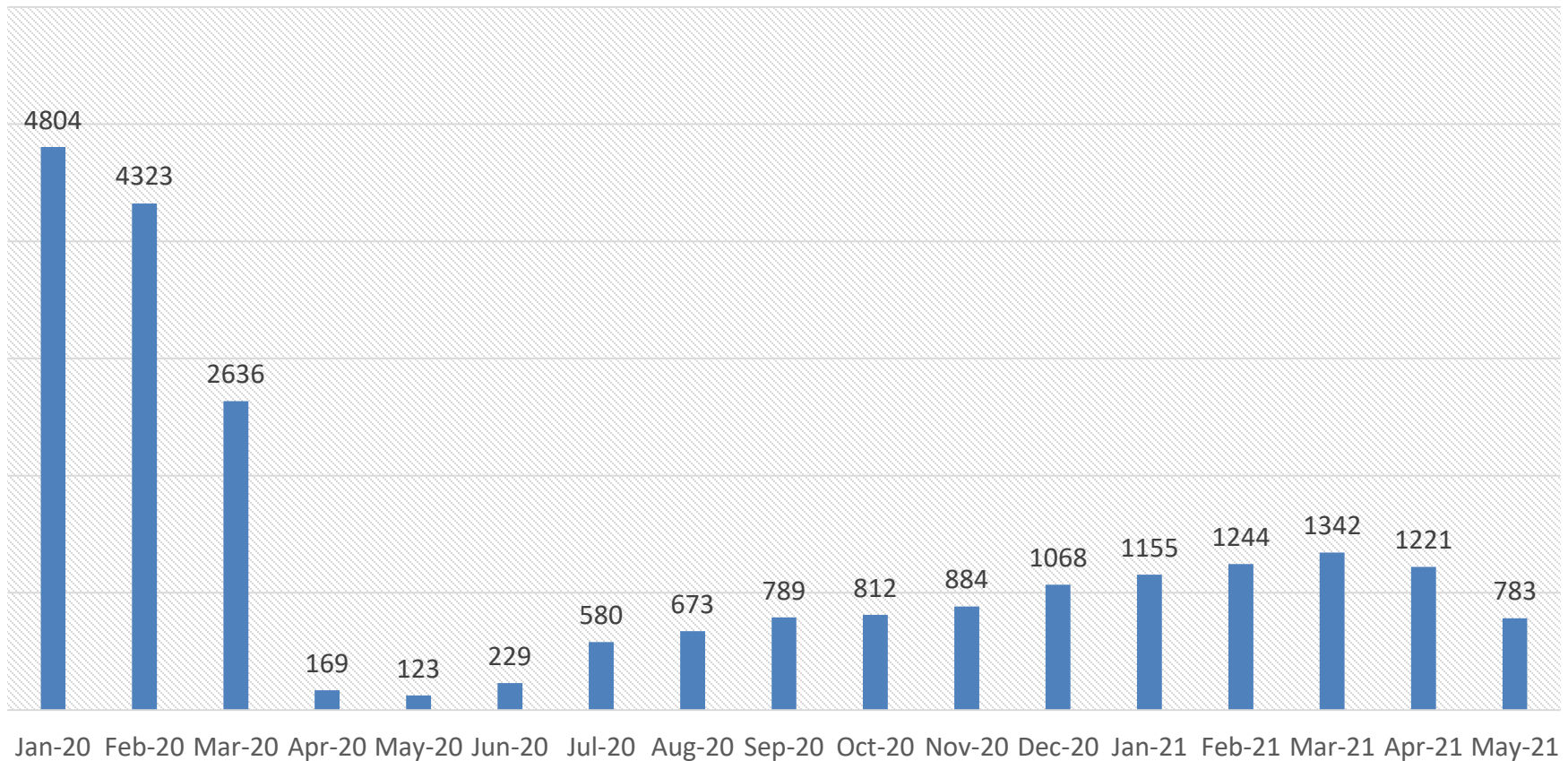
Domestic Cargo operations experienced a gradual increase and almost doubled in few months into covid. This spurt was mainly due to shipment of COVID related medicines, medical equipment and other support systems.

International passenger flights (Indian Carriers) GAR



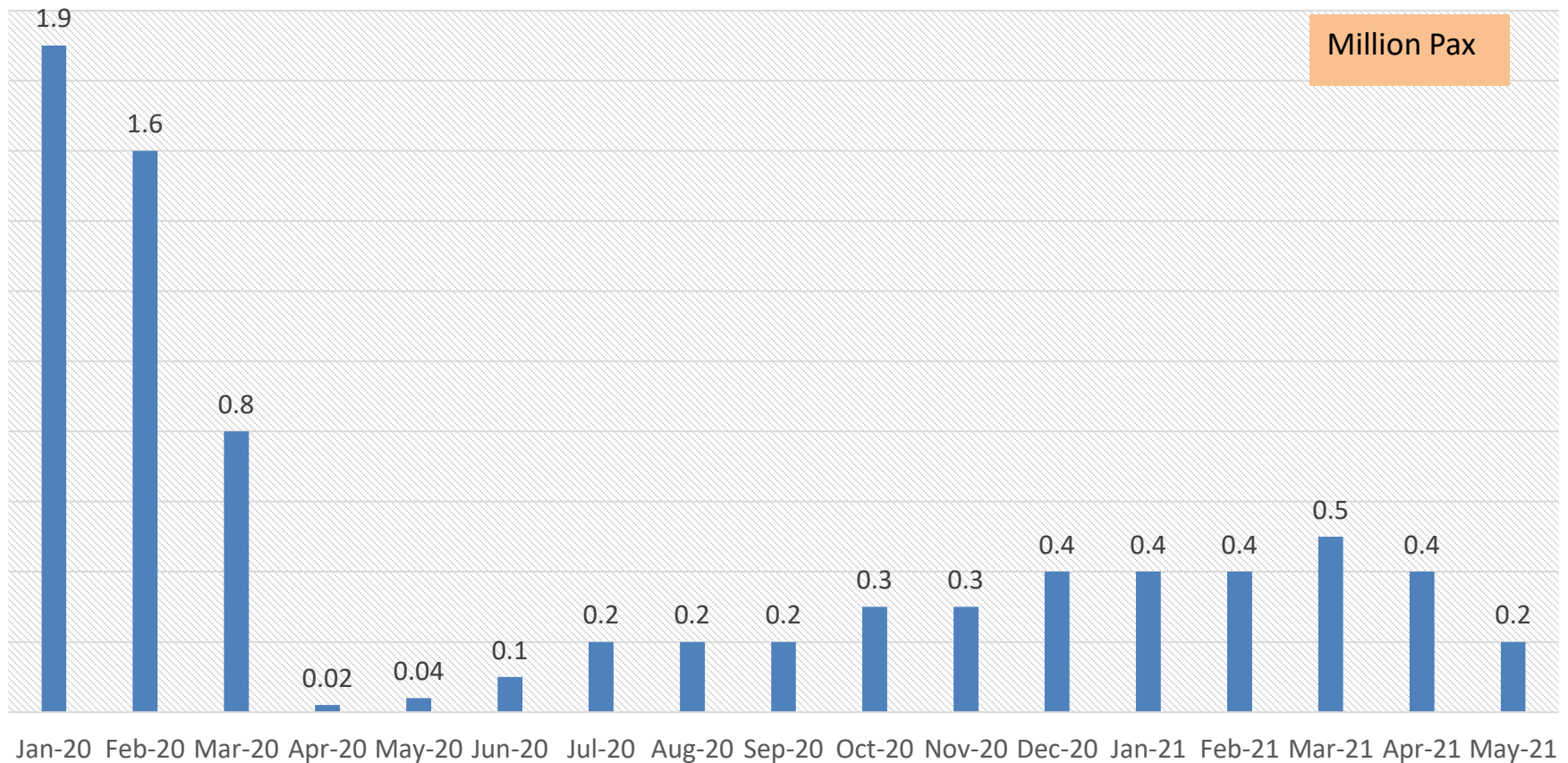
International Passenger flights are restricted by Indian Govt since Mar'20. Flights are operating under Air Bubble, Vande Bharat or Repatriation blanket by Indian carriers mainly Air India.

International passenger flights (Foreign Carriers)



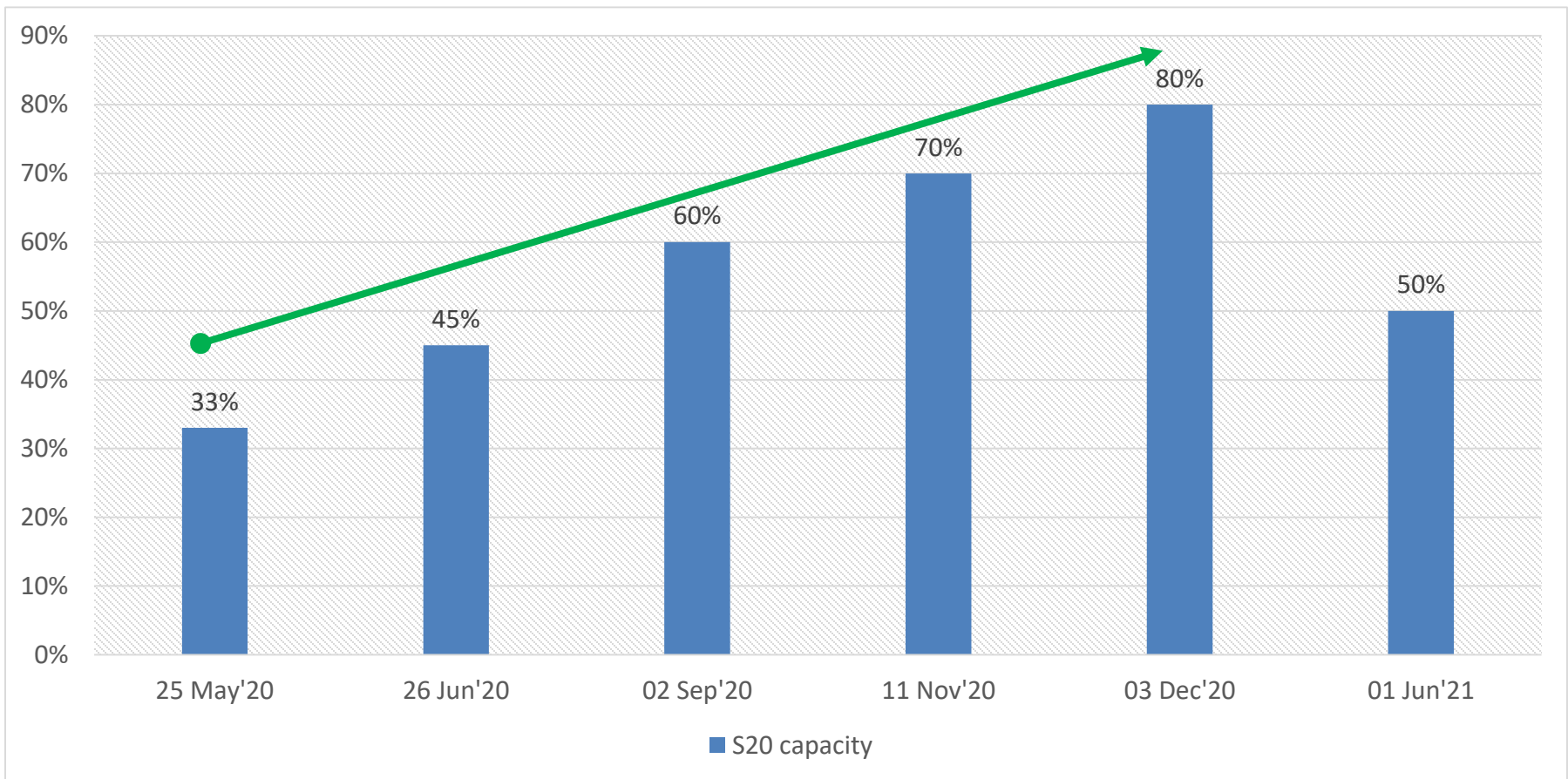
Foreign carriers passenger flights have been restricted by Indian Government since Mar'20. Few flights are operating under Air Bubble or Repatriation blanket.

International Passenger Load



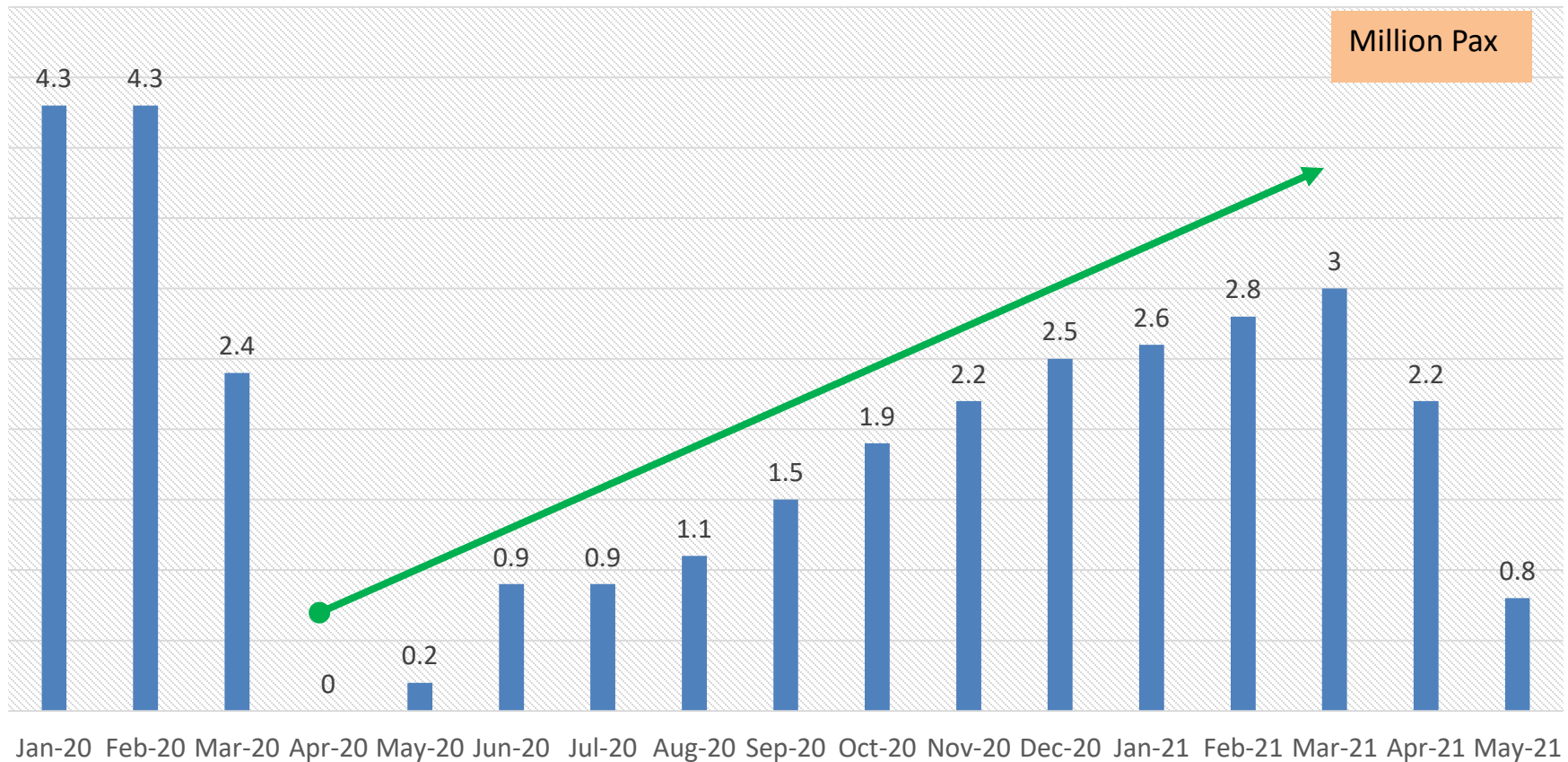
International passenger loads have been abysmal during and post COVID period mainly due to flight restrictions imposed by Indian Government since Mar'20. This got further aggravated due to restrictions imposed by US/Canada/Europe/UK on flights coming from India during the second wave of COVID.

Domestic flights resurgence



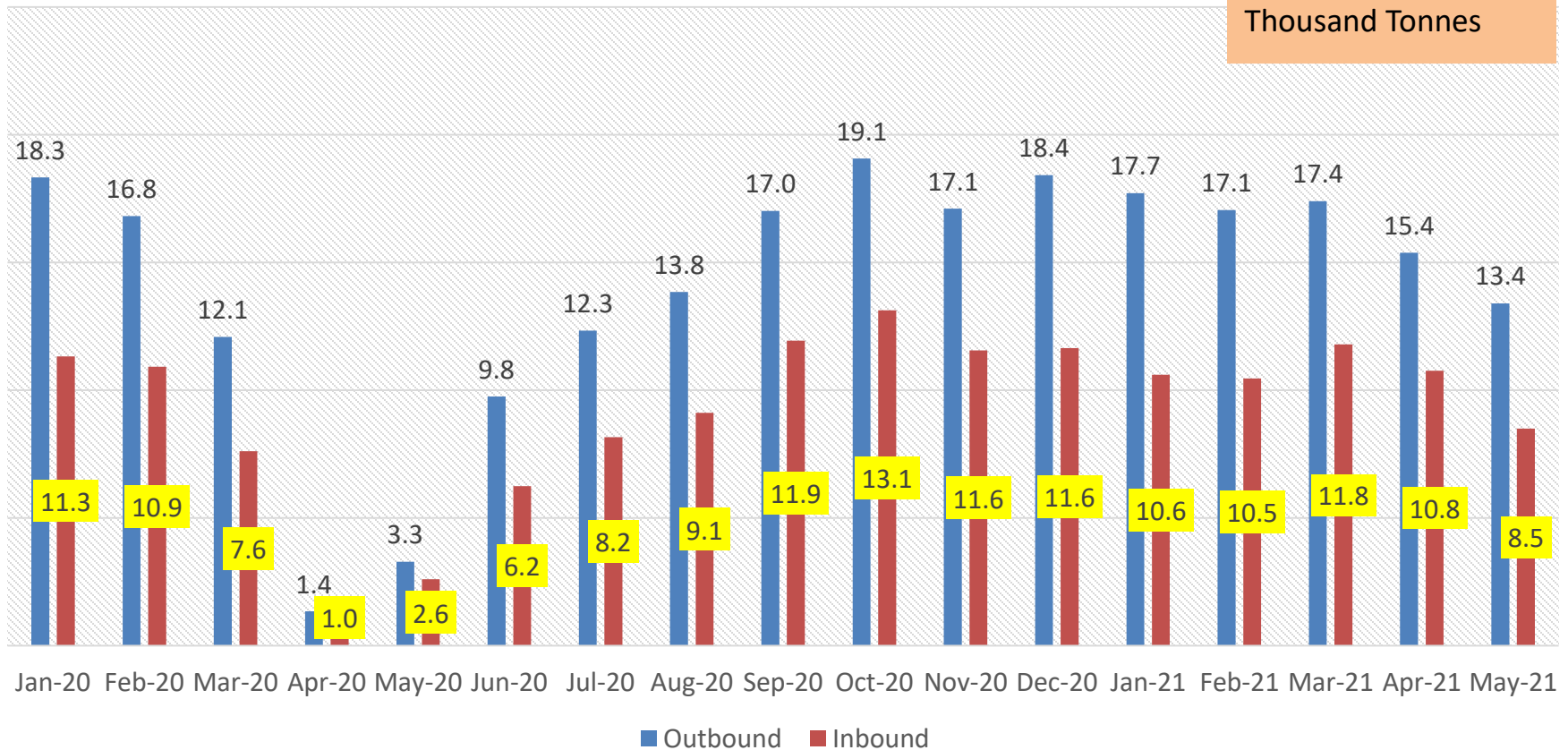
Domestic operations were stopped by Govt on 25th Mar'20 and operations resumed in a restricted manner from 25th May'20. It started with 33% capacity of approved S20 schedule and was gradually increased as the PLF started rising.

Domestic Passenger – post covid upturn



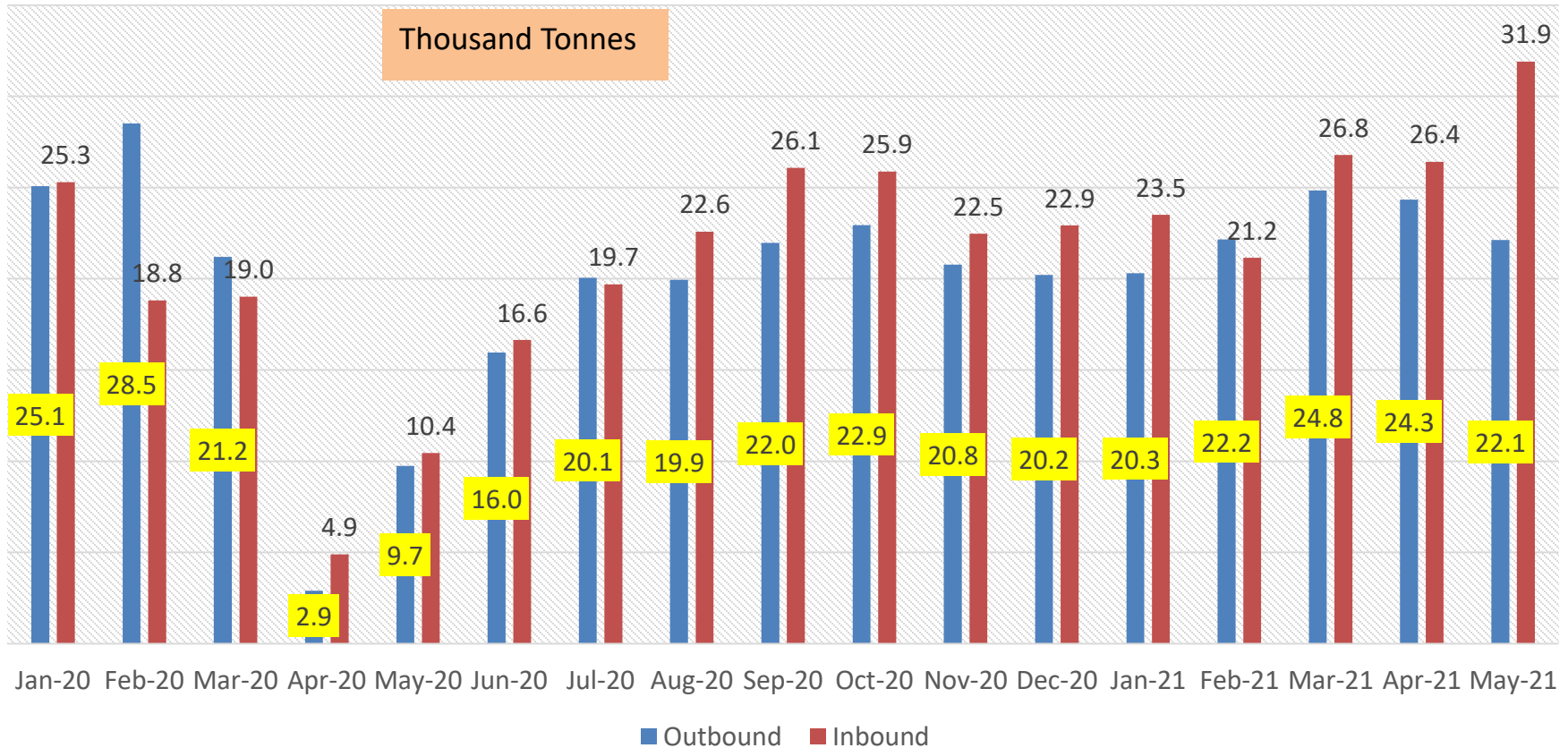
From zero pax in Apr'20, it recovered in the unlock phases of COVID first wave and peaked to 3 million pax before being hit again by the second wave in Mar-Apr 2021.

Domestic Cargo



For domestic Cargo, the operation has almost reached the pre covid level.

International Cargo



While the pax flights were slipping down, there was a gradual increase in Cargo operations.

Fight Against Covid-19

It is important,
not which way the wind blows but,
how we set our sails.





Thank you