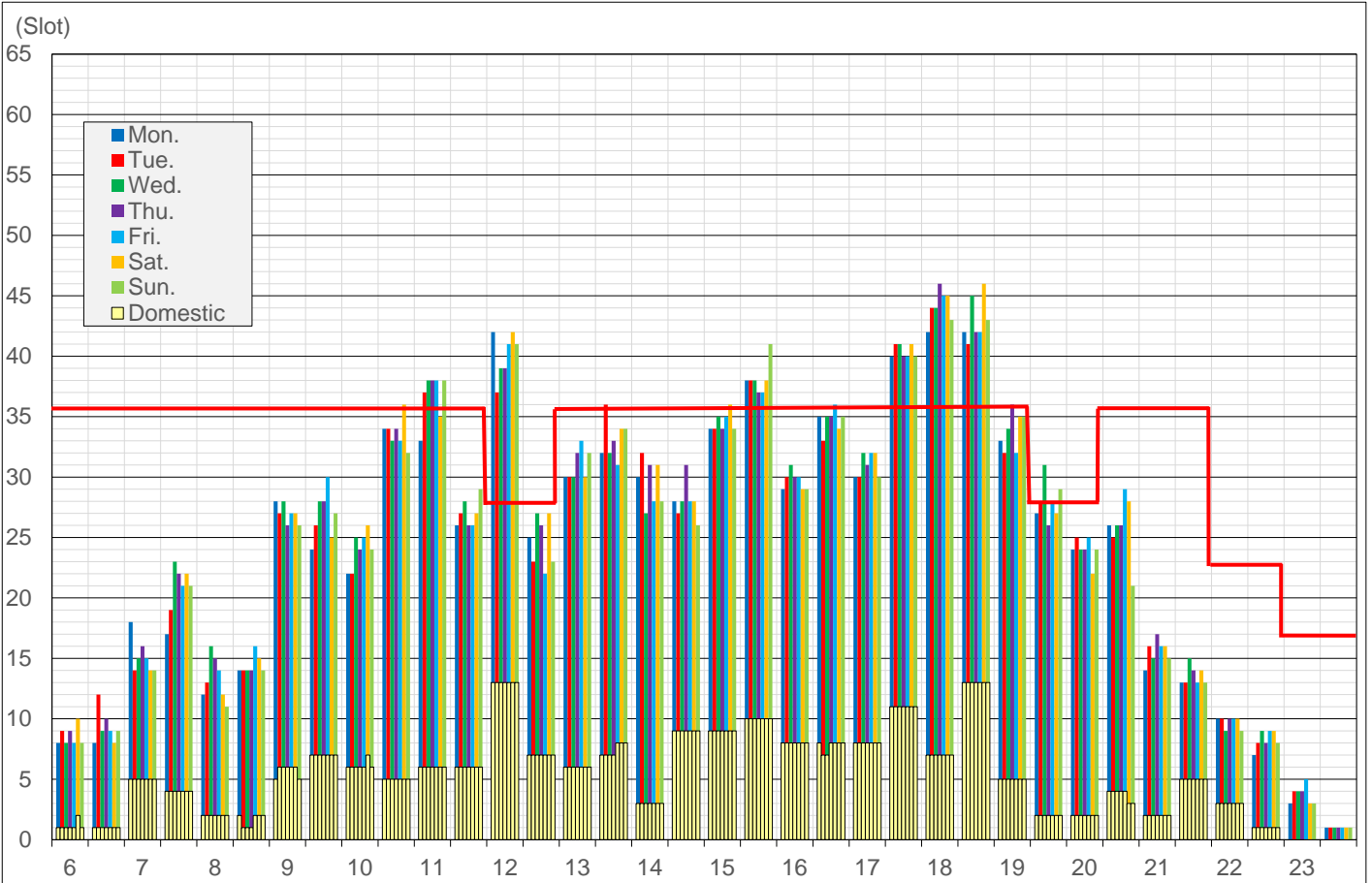
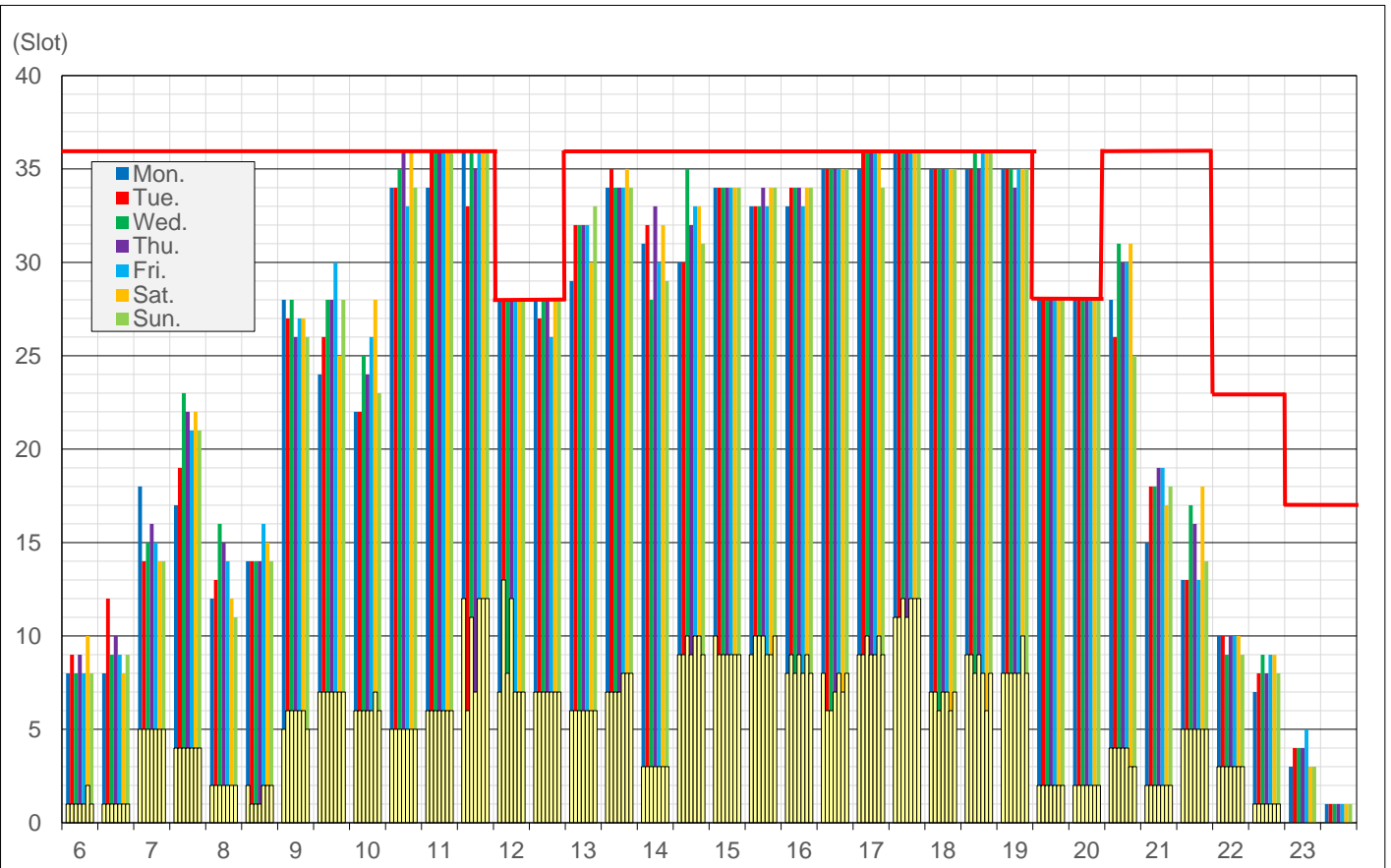


Submission (All)



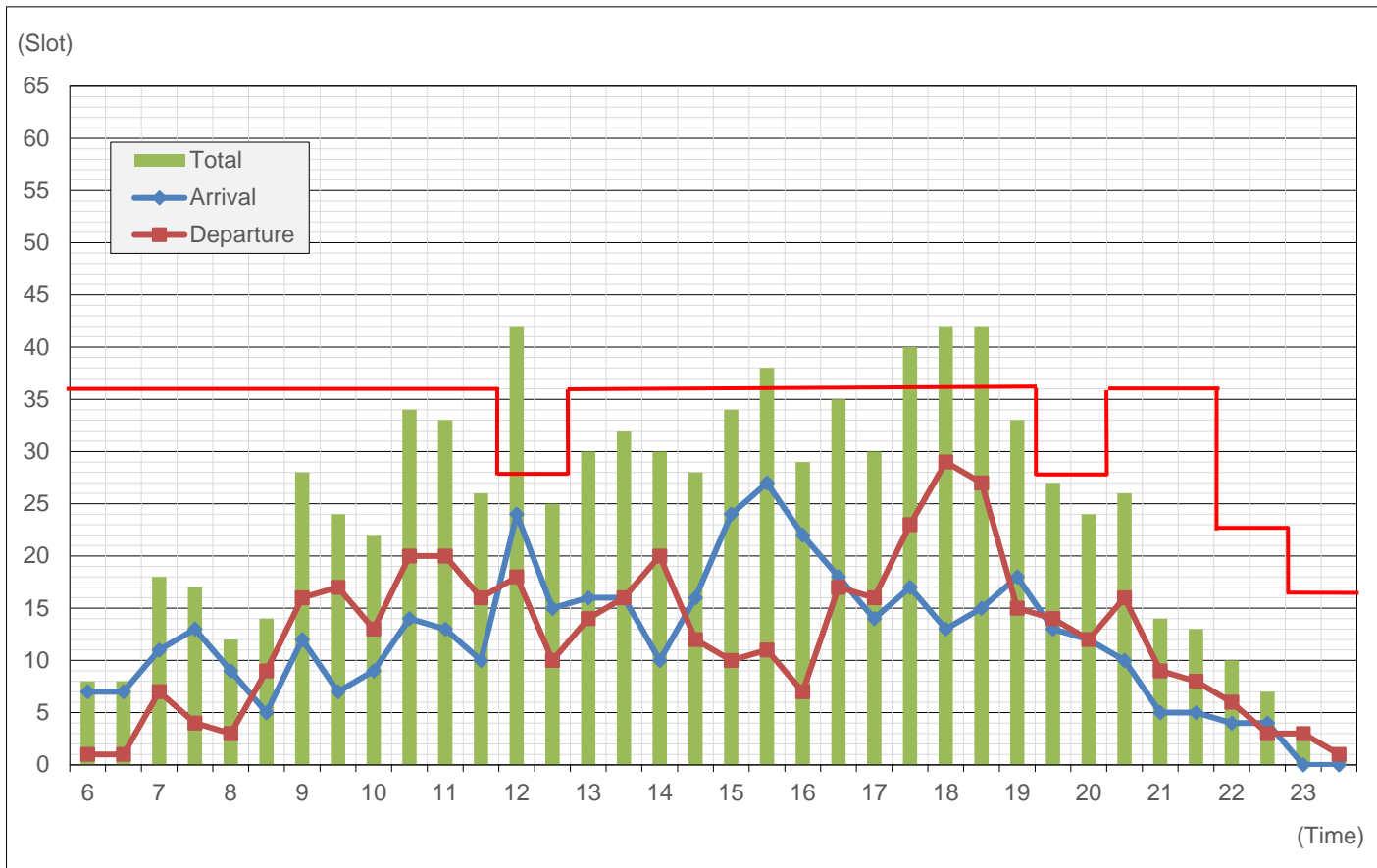
SAL (All)



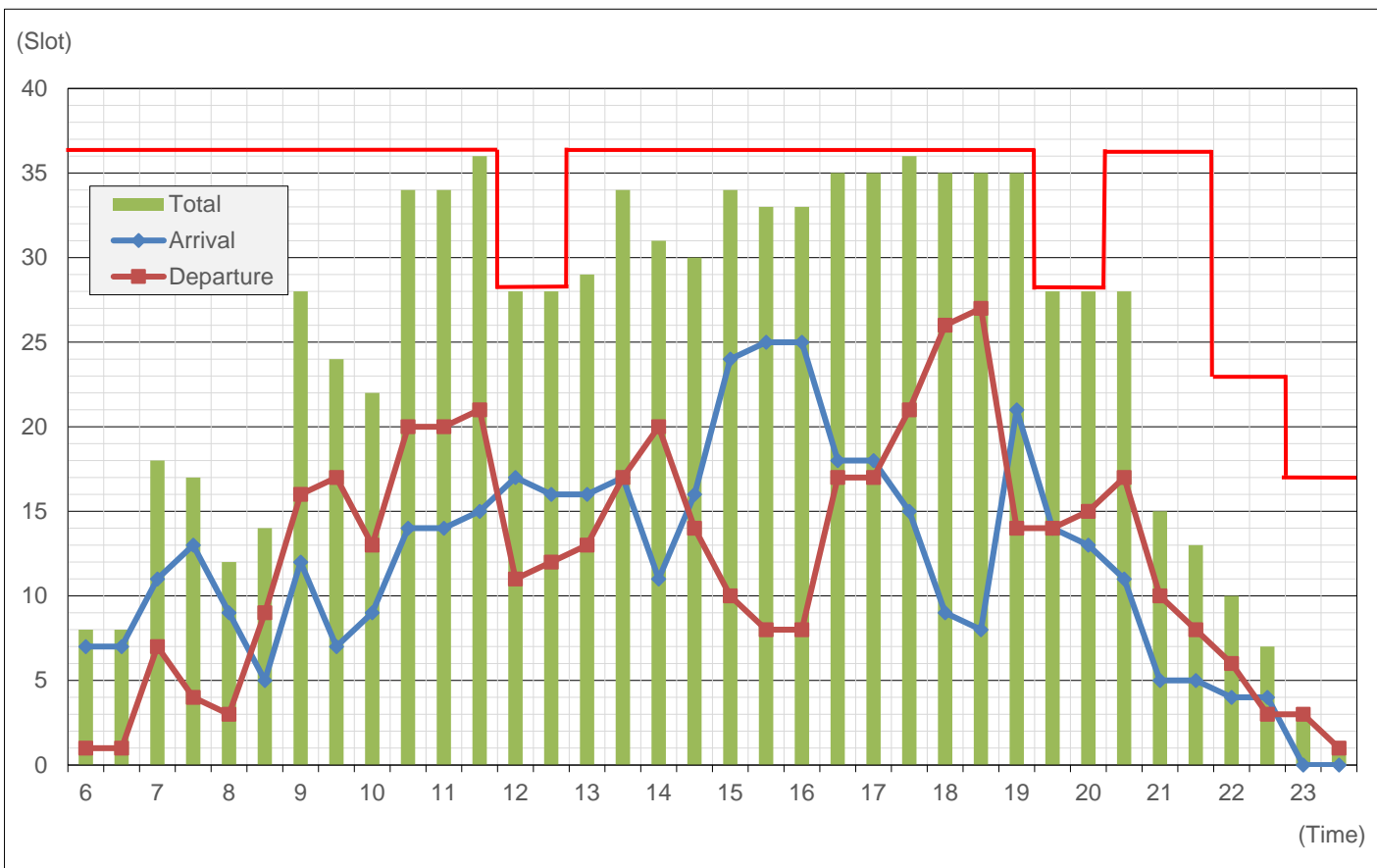
//STRICTLY CONFIDENTIAL//

For airlines: use of confidential information should be limited within/between authorized airlines only.
 For Airports: use of confidential information should be limited within each company.

Submission (Monday)

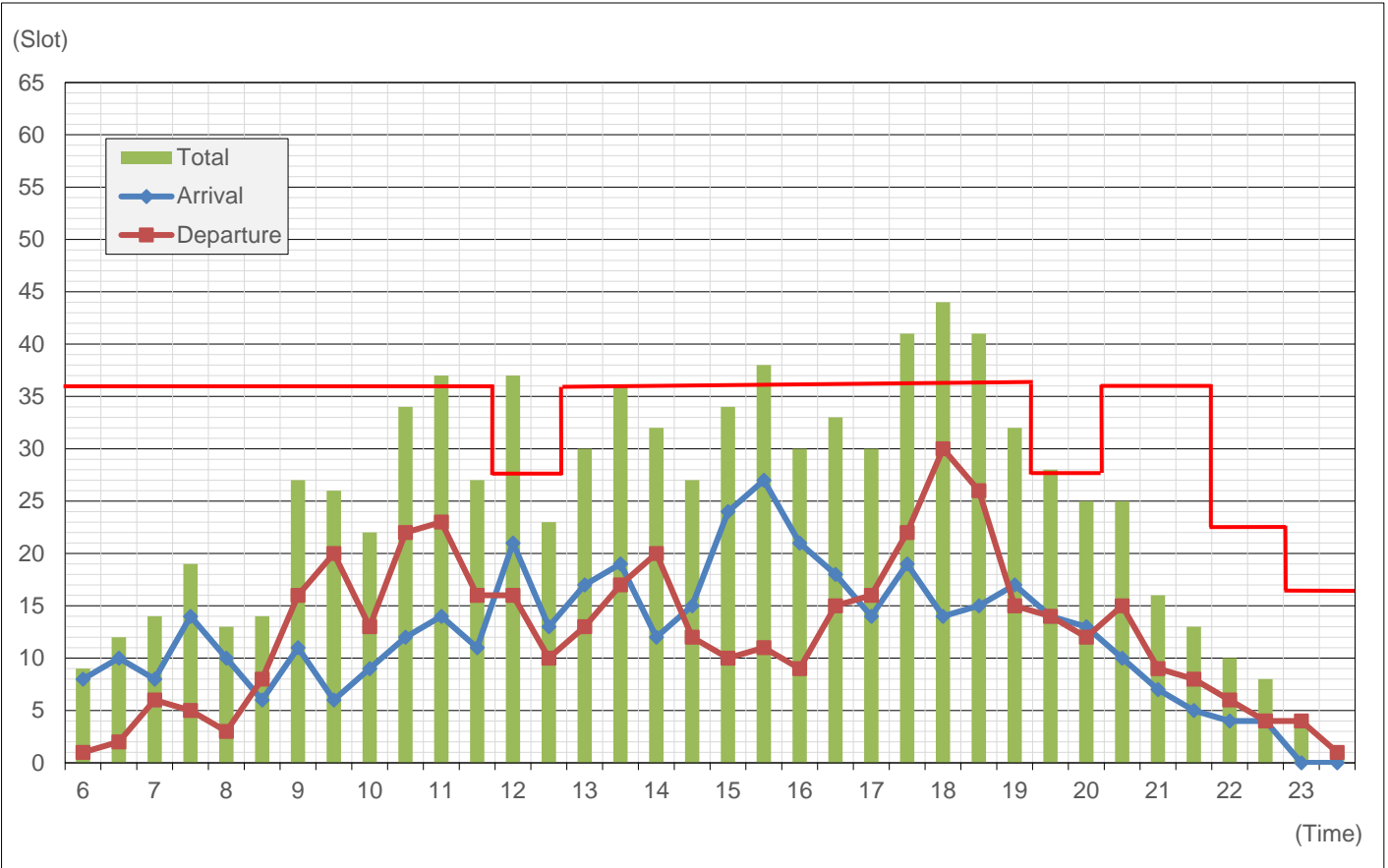


SAL (Monday)

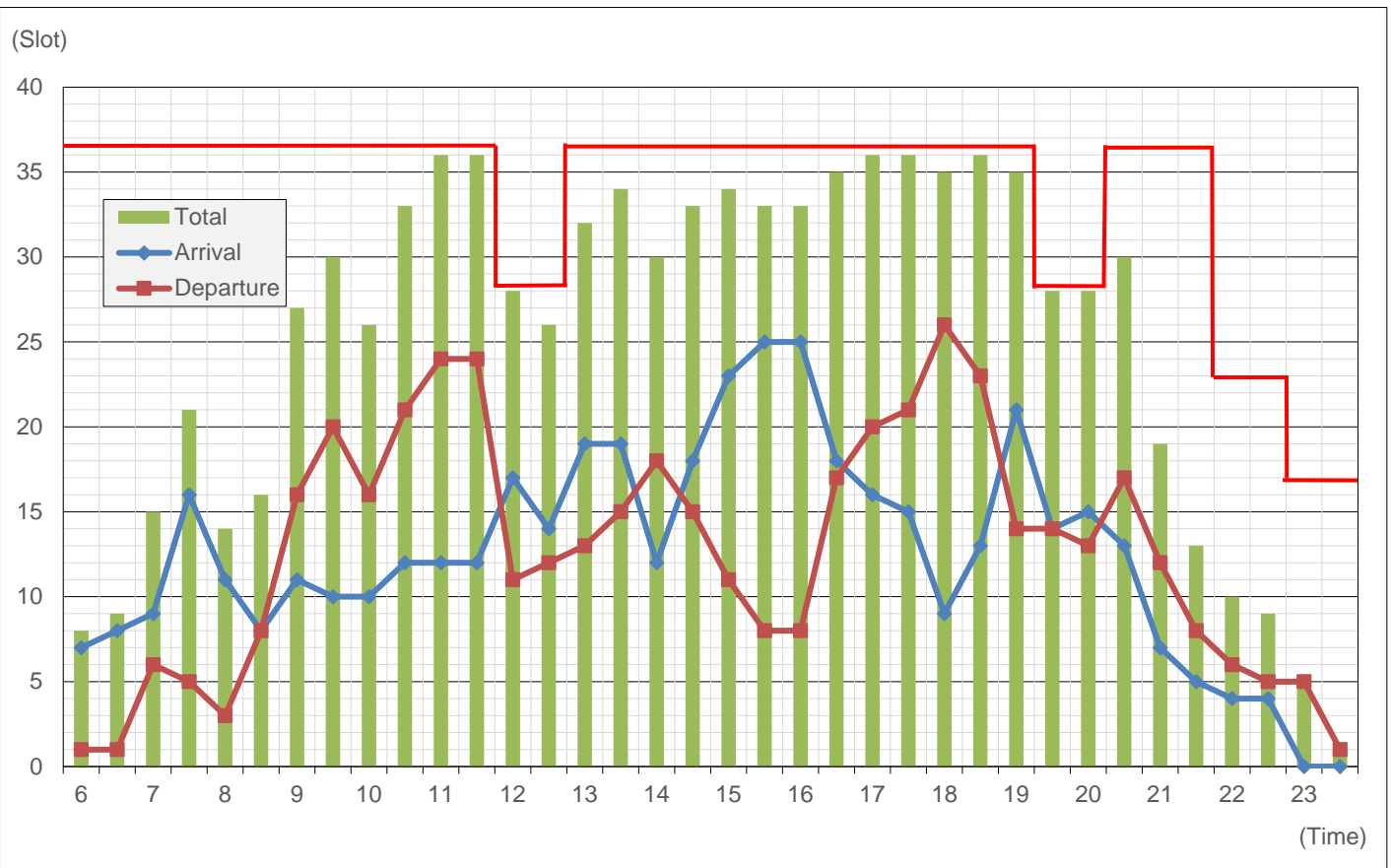


//STRICTLY CONFIDENTIAL//
For airlines: use of confidential information should be limited within/between authorized airlines only.
For Airports: use of confidential information should be limited within each company.

Submission (Tuesday)



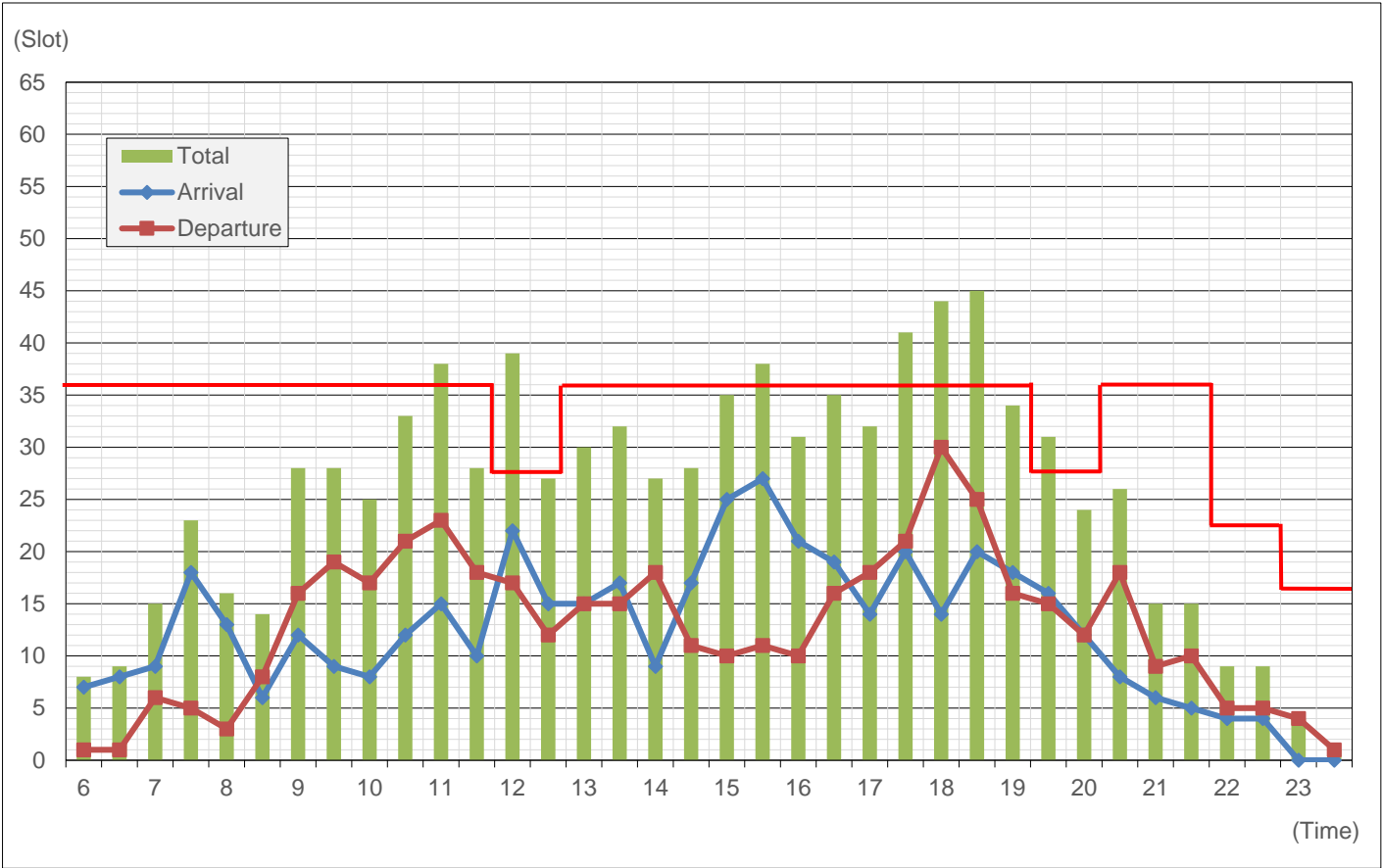
SAL (Tuesday)



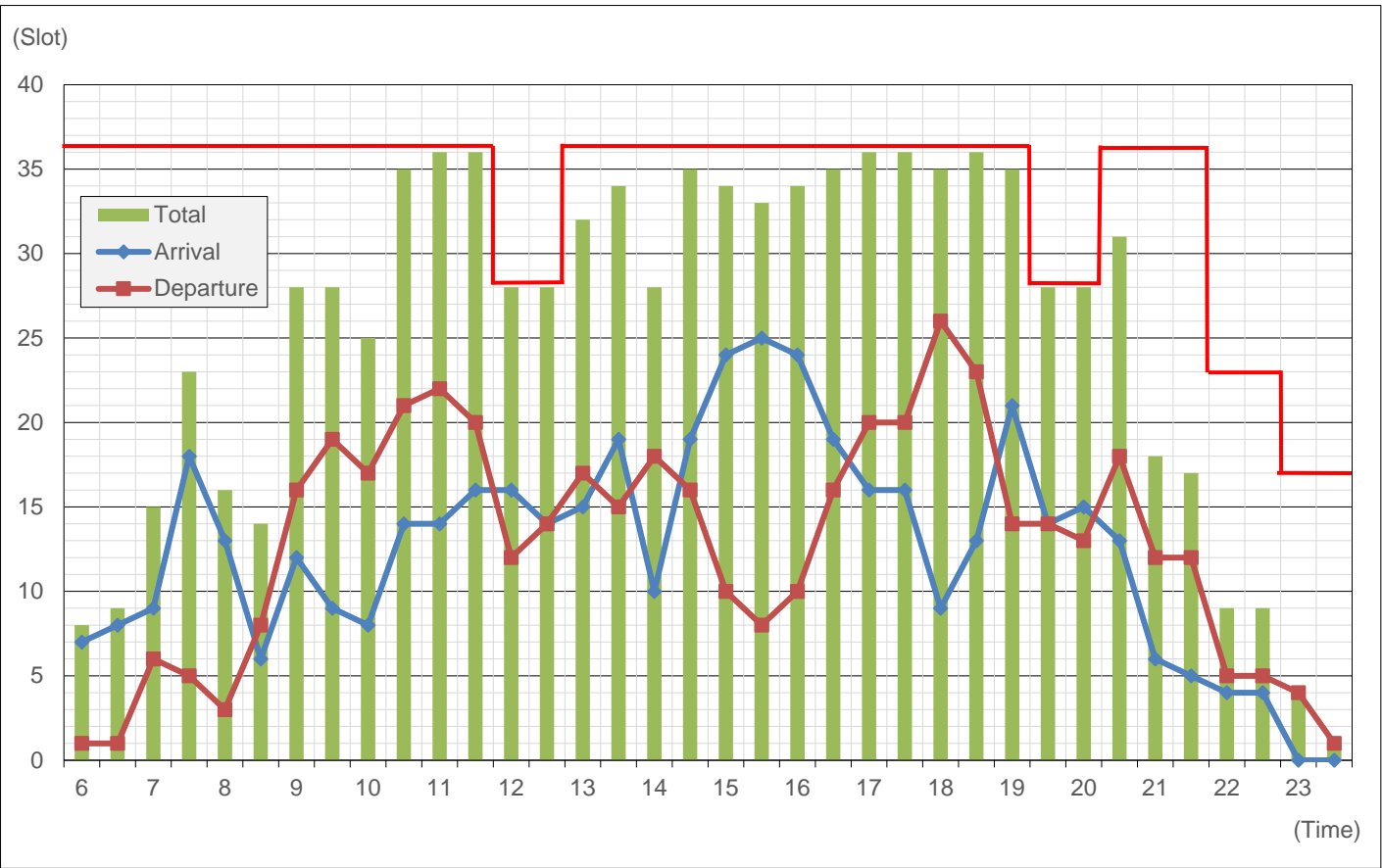
//STRICTLY CONFIDENTIAL//

For airlines: use of confidential information should be limited within/between authorized airlines only.
For Airports: use of confidential information should be limited within each company.

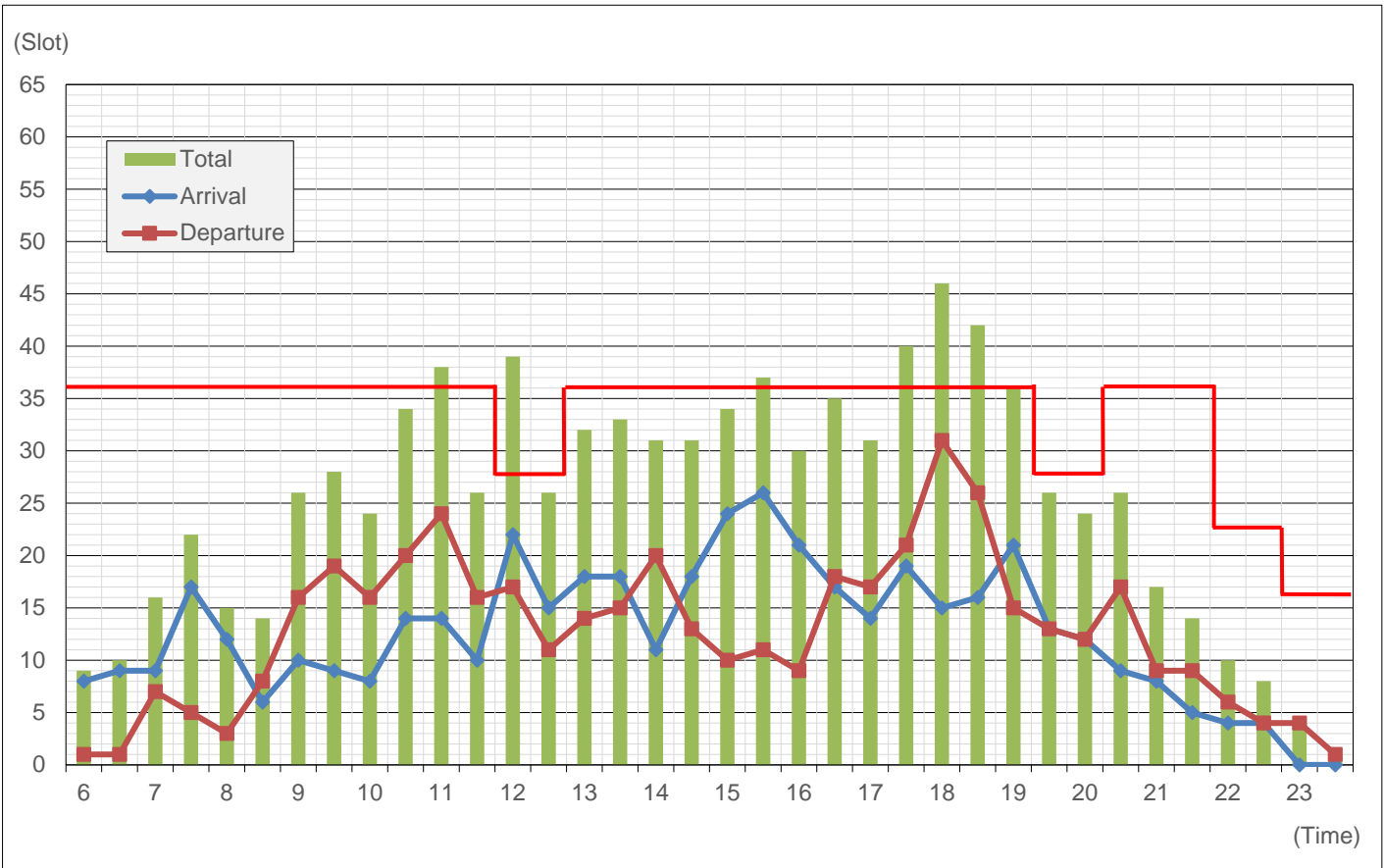
Submission (Wednesday)



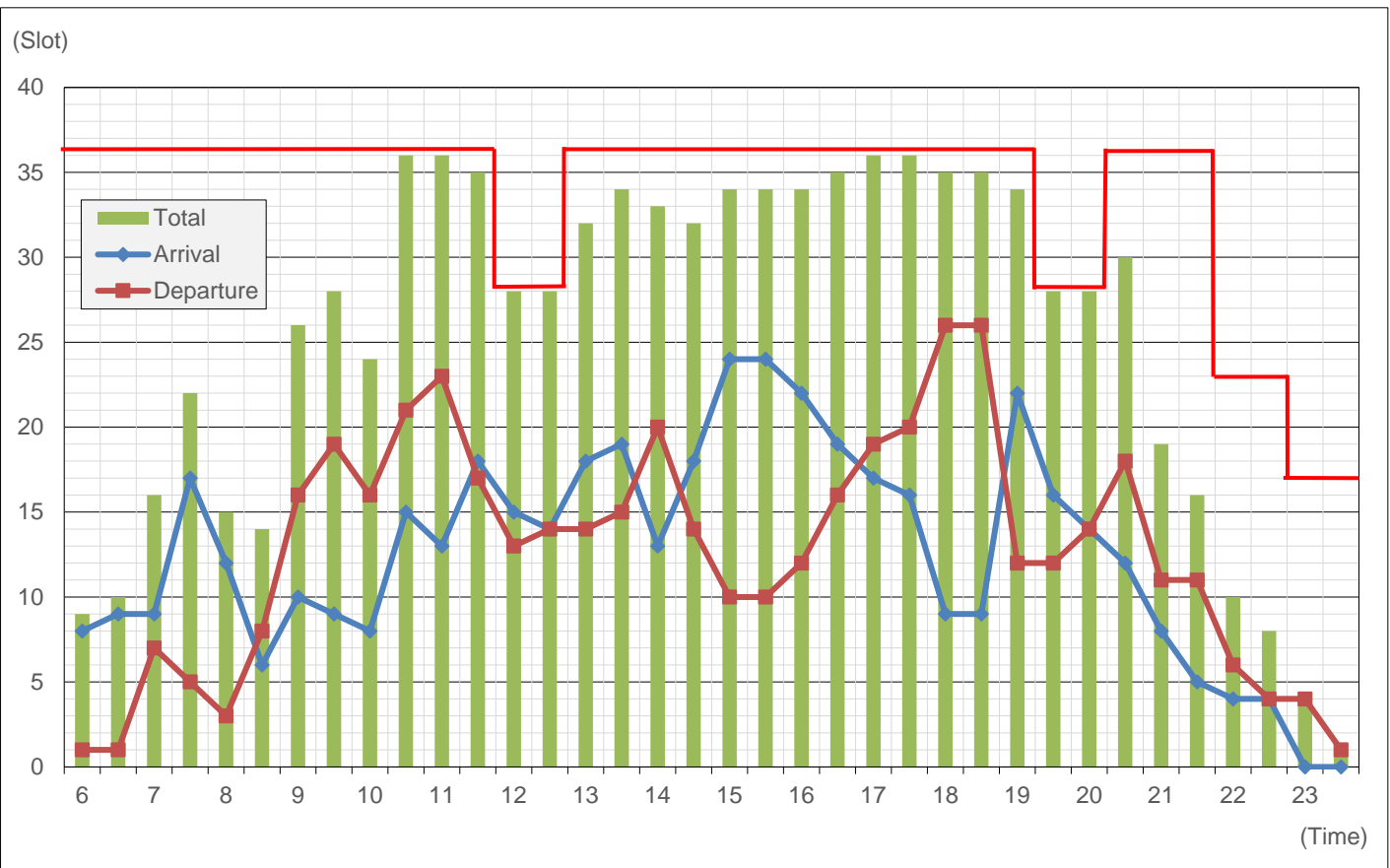
SAL (Wednesday)



Submission (Thursday)



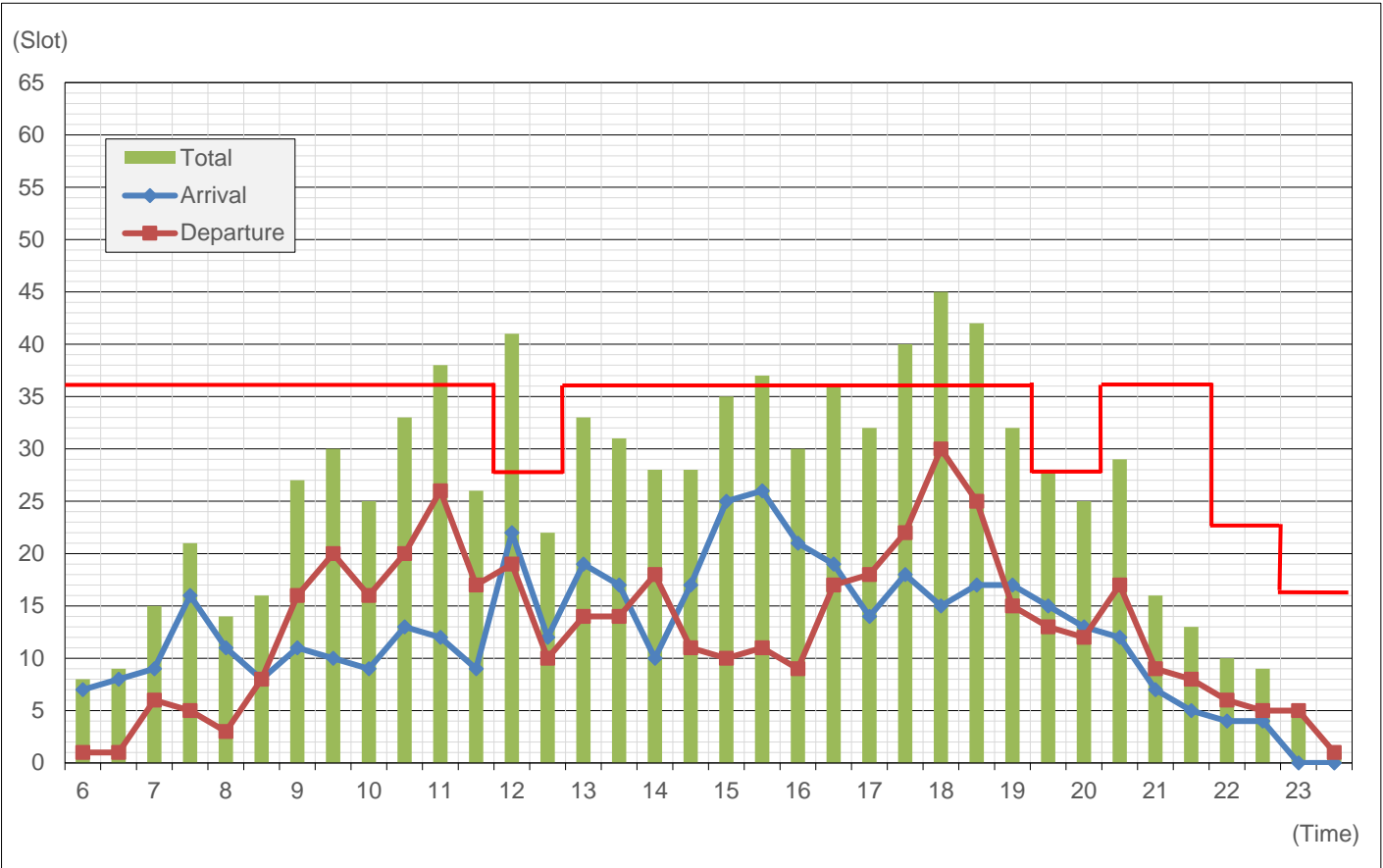
SAL (Thursday)



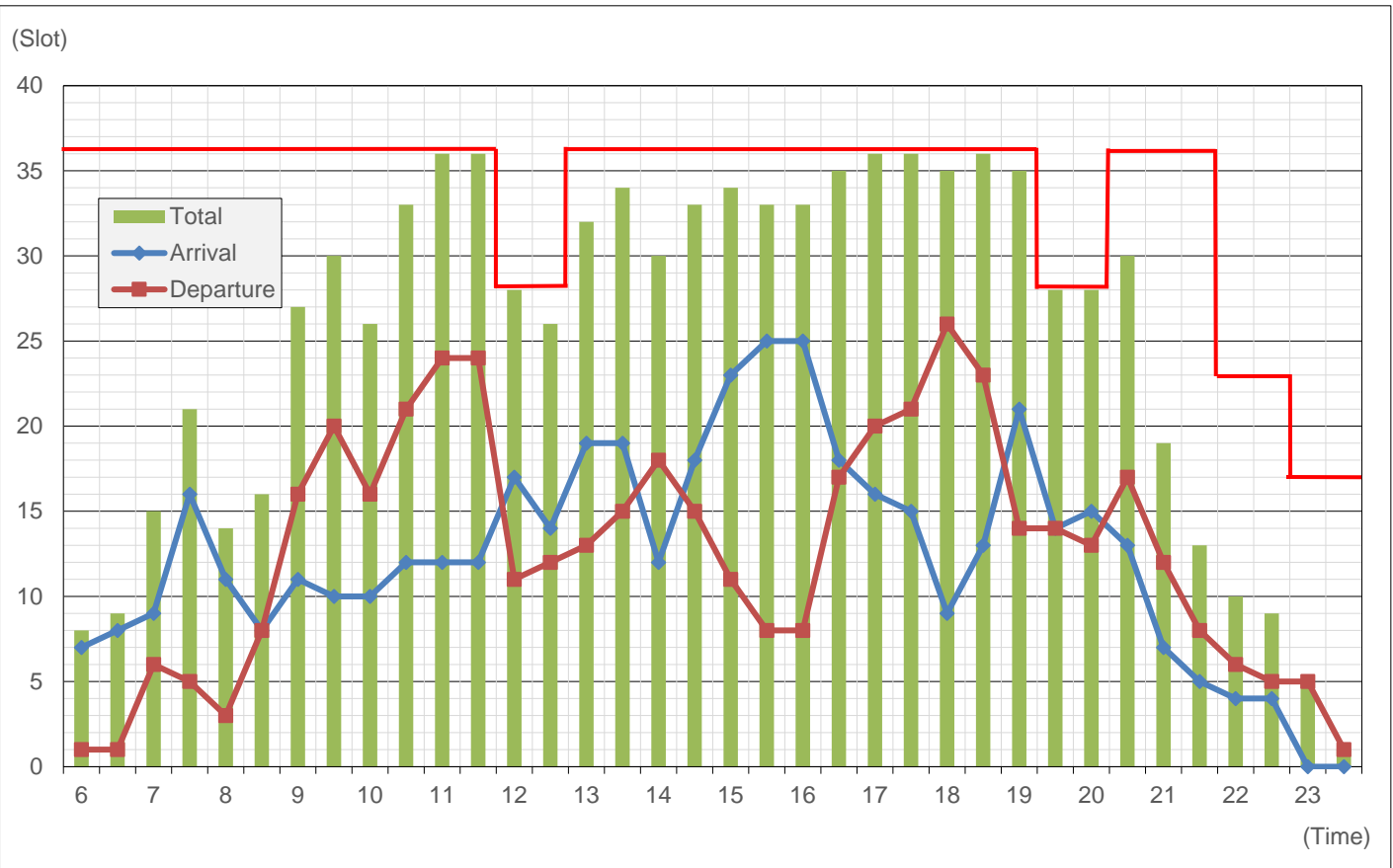
//STRICTLY CONFIDENTIAL//

For airlines: use of confidential information should be limited within/between authorized airlines only.
For Airports: use of confidential information should be limited within each company.

Submission (Friday)



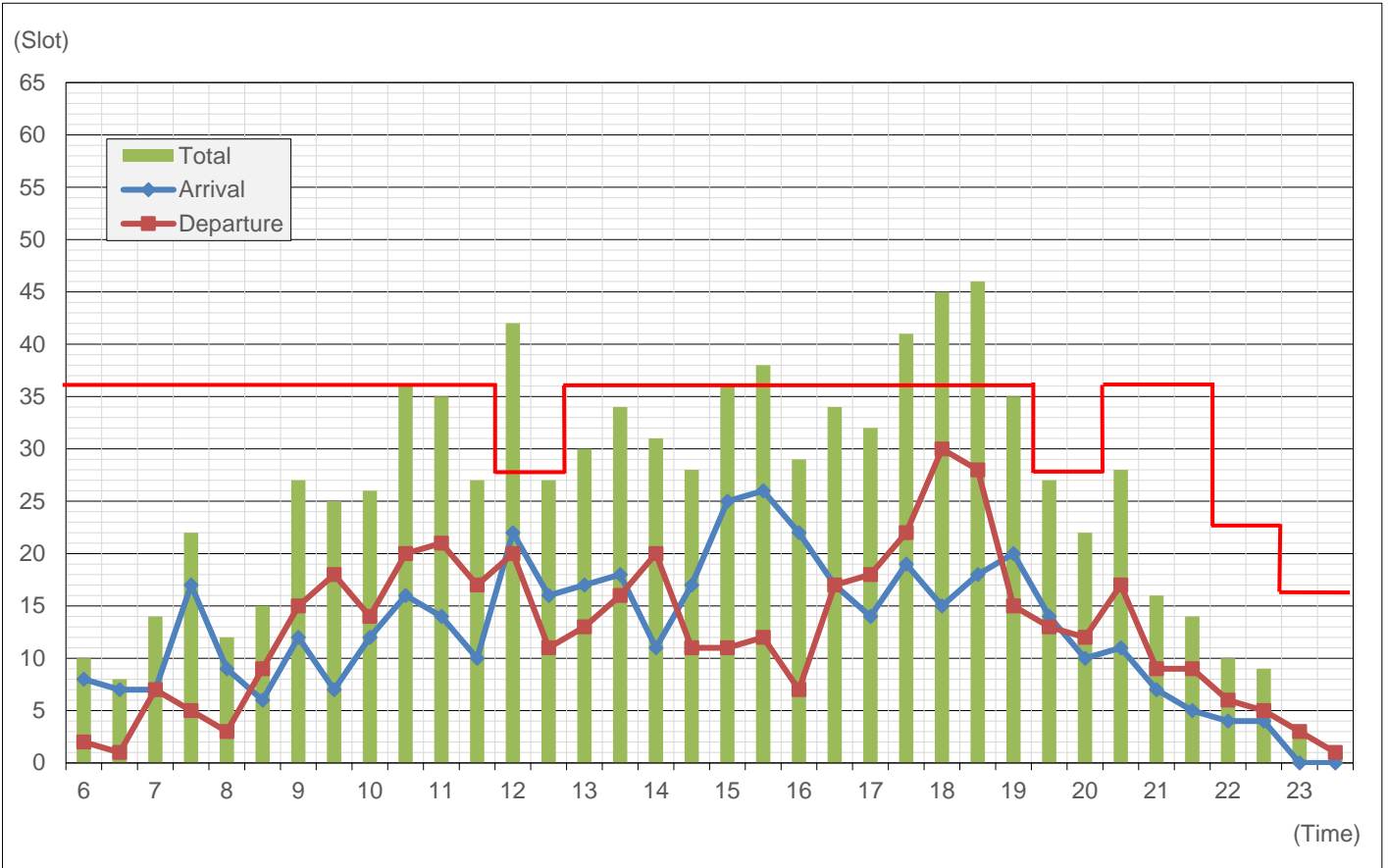
SAL (Friday)



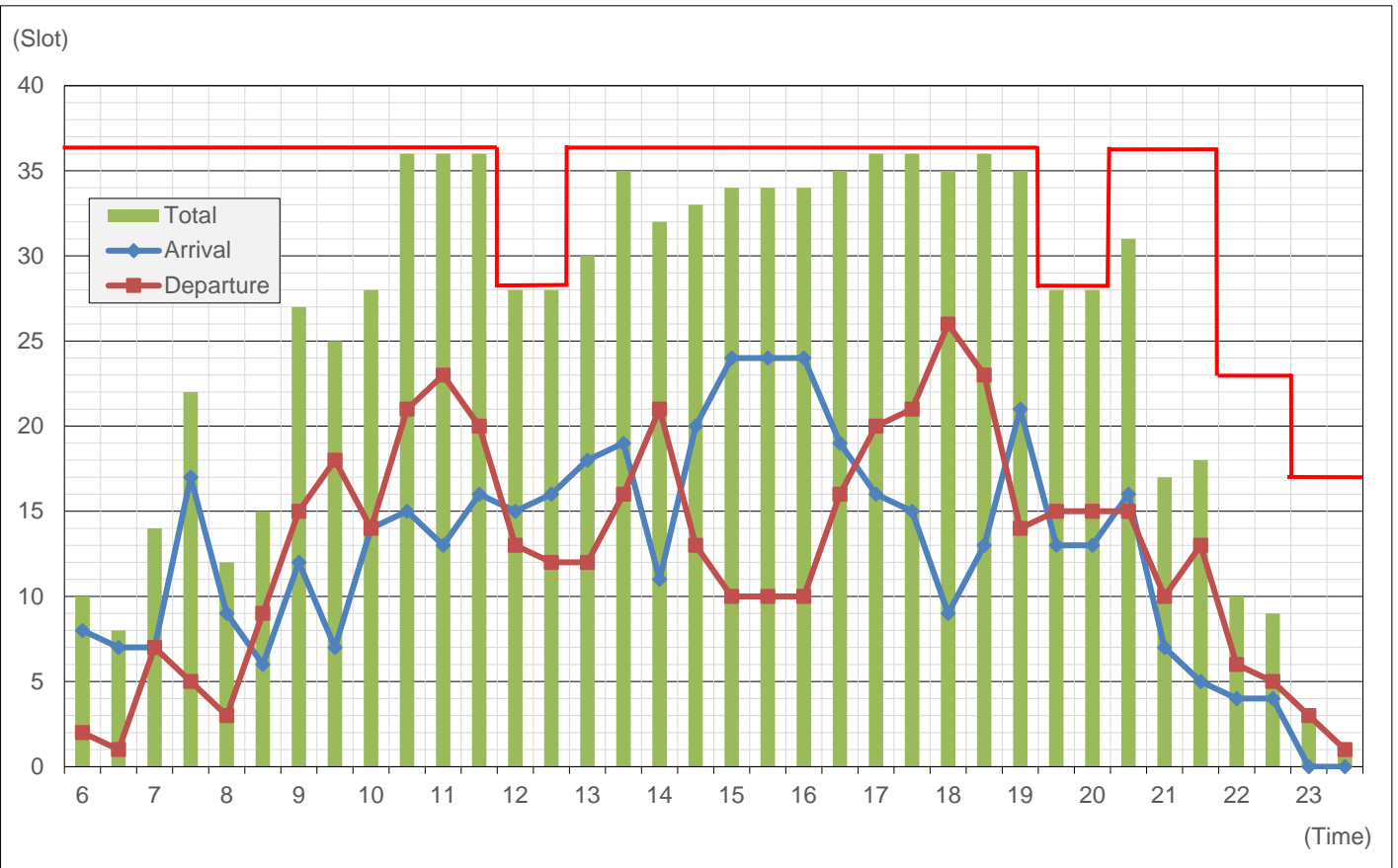
//STRICTLY CONFIDENTIAL//

For airlines: use of confidential information should be limited within/between authorized airlines only.
For Airports: use of confidential information should be limited within each company.

Submission (Saturday)



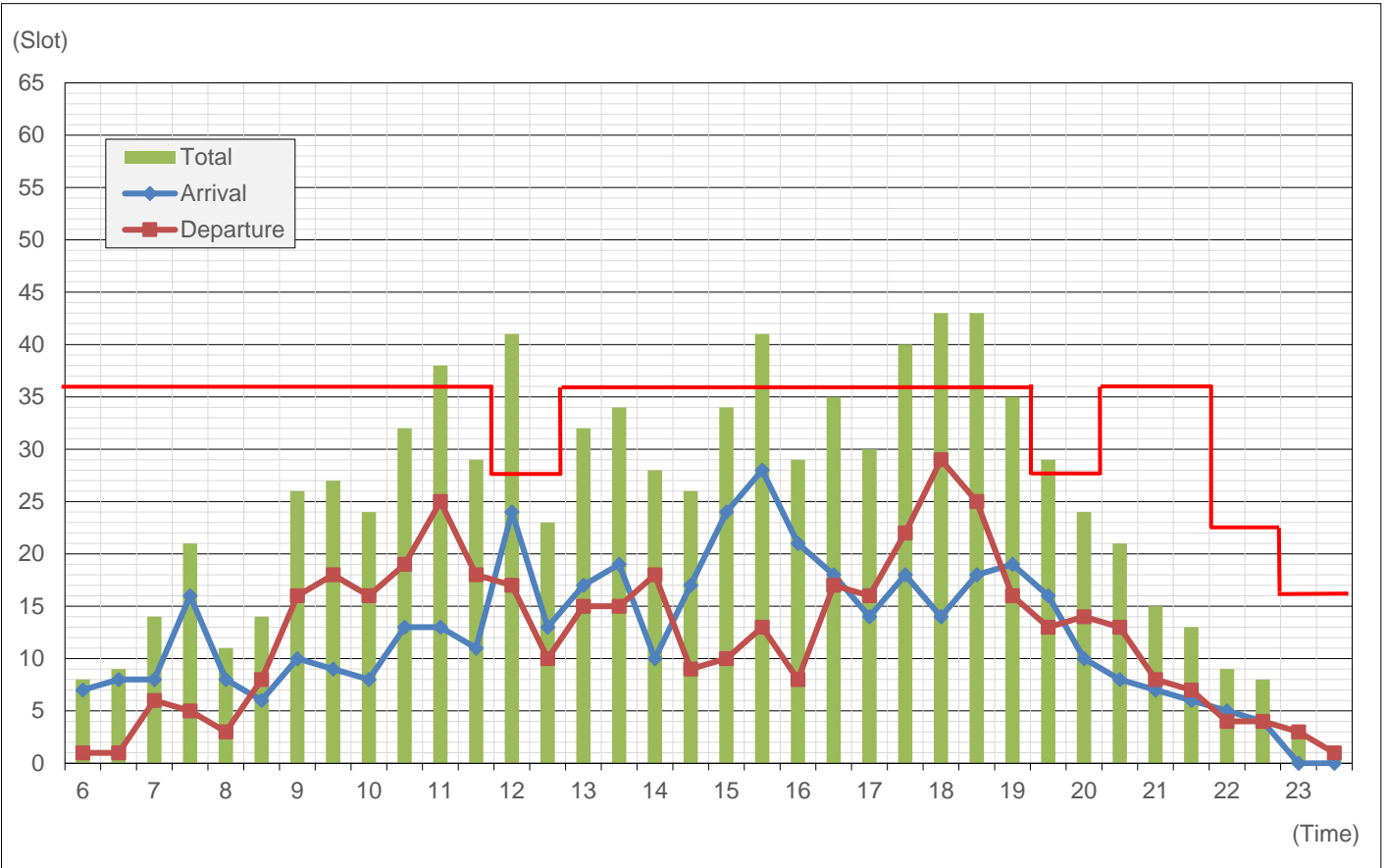
SAL (Saturday)



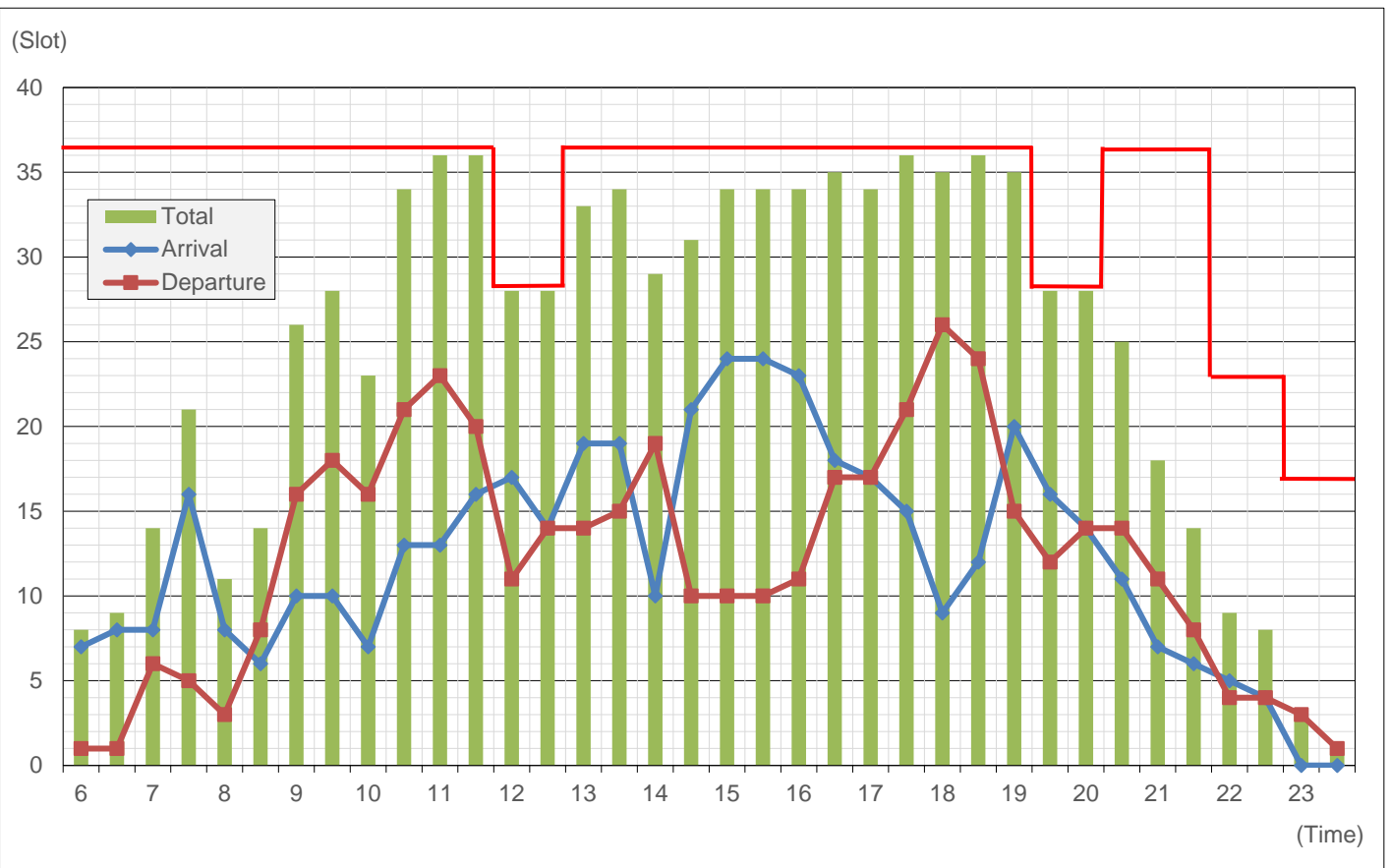
//STRICTLY CONFIDENTIAL//

For airlines: use of confidential information should be limited within/between authorized airlines only.
For Airports: use of confidential information should be limited within each company.

Submission (Sunday)



SAL (Sunday)



//STRICTLY CONFIDENTIAL//

For airlines: use of confidential information should be limited within/between authorized airlines only.
For Airports: use of confidential information should be limited within each company.